



## LINEA CONTROL

La **LINEA CONTROL** comprende una serie di teste angolari adatte ad essere montate nel magazzino utensile e quindi essere scambiate automaticamente. La corretta installazione prevede il montaggio di uno **stop block** a bordo macchina. Per una maggior rigidità il cono di attacco alla macchina è realizzato in un unico pezzo con l'albero principale.

*CONTROL LINES include a wide range of angle heads to be used on machining centres with ATC and therefore can be mounted in the tool magazine and automatically exchanged in the machine spindle. A **stop block** mounted on the machine spindle ensure a correct positioning and prevents rotation. The input spindle is one solid piece with the main shaft to grant a higher rigidity.*

**SCANNERIZZA IL QR CODE**  
per le istruzioni di montaggio

*SCAN THE QR CODE*  
for the set-up instructions



**Dimensione STOP BLOCK per teste**  
*Dimensions STOP BLOCK for heads*

**T90cn-0,4 / 0,5 / 1,5 / 2,5 / 3,5 / 4,5**



**Dimensione STOP BLOCK per teste**  
*Dimensions STOP BLOCK for heads*

**T90cn-5**



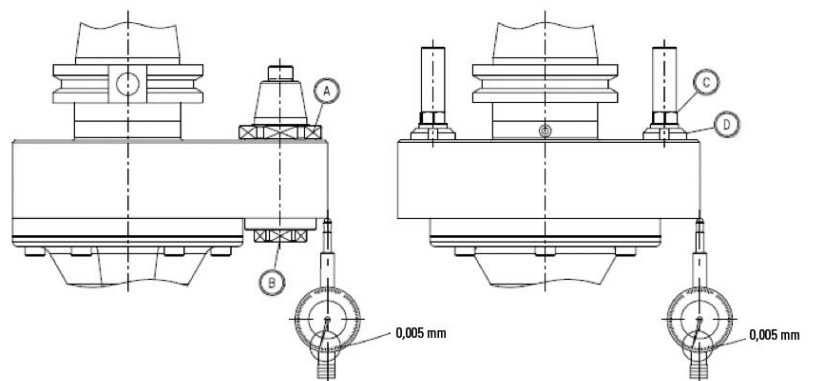
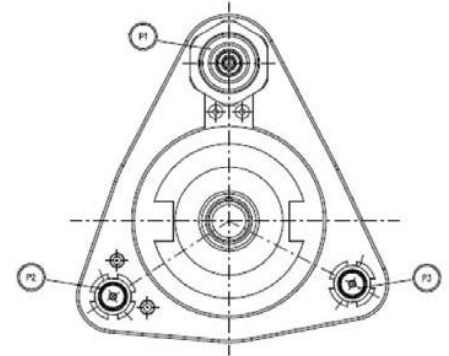
## SUPPORTO 3 PUNTI

### 3 point support

Per aumentare la rigidità e stabilità durante la lavorazione, è possibile realizzare una **flangia con 3 punti di supporto**. La flangia viene realizzata su misura a seconda delle dimensioni del mandrino macchina. Solitamente per questo tipo di realizzazione si prevede un magazzino esterno o una stazione pick up per accogliere la testa.

Ogni flangia con 3 punti di appoggio viene **realizzata ad hoc** in base al mandrino macchina pertanto non esiste uno standard. I punti di appoggio sono tutti regolabili e devono essere registrati durante la prima installazione.

*In order to increase rigidity and stability during machining, Alberti can build a special flange with 3 point support system. The flange is custom-made according to the dimension of the machine spindle. With this system the head cannot be loaded into the tool magazine but requires an external uploading or pick up station.*



SCANNERIZZA  
IL QR CODE  
per le istruzioni  
di montaggio

SCAN THE  
QR CODE  
for the set-up  
instructions





## Esempi di **STOP BLOCK E PERNO**

*Examples of stop blocks and pins*



In caso non fosse possibile utilizzare uno dei perni o stop block già disponibili, Alberti fornisce tutta l'assistenza necessaria per **realizzare uno stop block ad hoc per la propria macchina**. Di seguito alcuni esempi.

*In case the customer cannot use any of the pins or stop block already available, Alberti will help in finding the correct solution and **provide the customized stop block for the machine**. Following few examples.*

**A**  
Cod: 5951800001

*Perno e stop block  
Alberti standard  
Alberti standard  
Pin and Block*

**B**  
Cod: 59518006

*Perno e stop block  
Alberti standard  
Alberti standard  
pin and block*

**C**  
Cod: 5951800073

*Perno e stop block conico  
regolabile standard  
Standard conical pin  
and stop block*

**D**  
Cod: 4951800091

*Perno e stop block  
prismatico  
Prismatic pin  
and stop block*

**E**

*Perno flottante  
Floating pin*

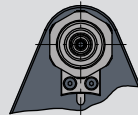
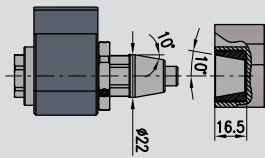
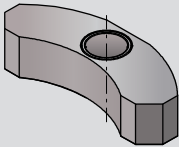
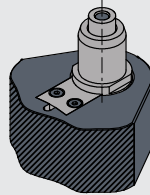
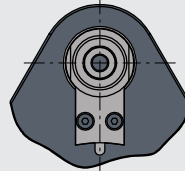
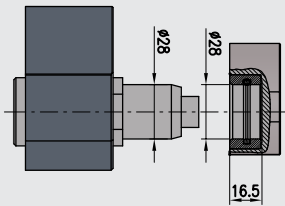
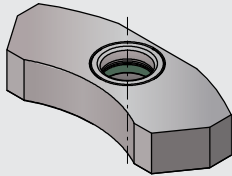
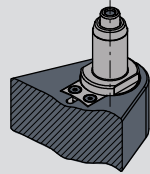
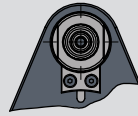
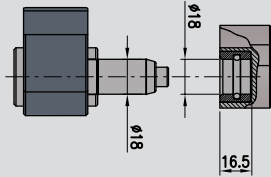
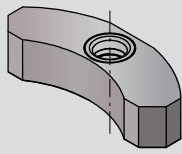
**F**

*Perno maschio speciale  
Special male pin*

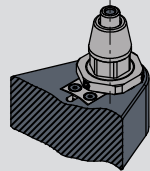
**G**

*Perno femmina speciale  
Special female pin*

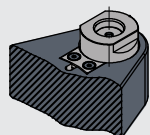
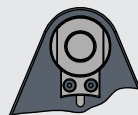
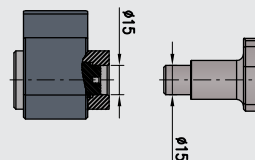
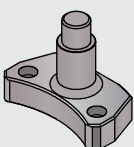
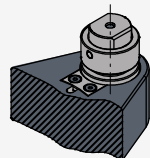
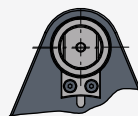
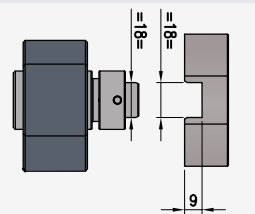
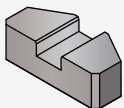
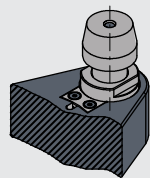
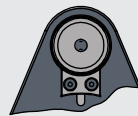
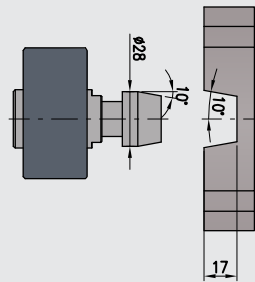
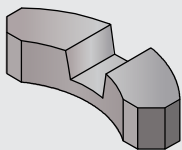
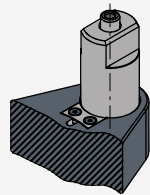
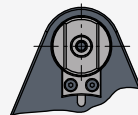
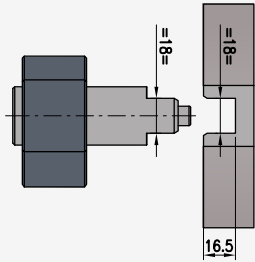
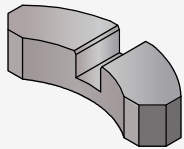
*Stop block e perni di fornitura Alberti - Stop block and Pin manufactured by Alberti*



*Perno regolabile  
Adjustable pin*



*Perno per stop block speciali già montati in macchina - Special Pin for pre mounted stop block*



# T90cn-0.4C

ACT9004C

## Technical data

Caratteristiche tecniche



Ratio  
Rapporto  
1:1



RPM  
Velocità  
10.000 min<sup>-1</sup>



Max. axial load  
Max. carico assiale  
100 N



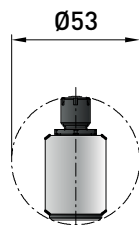
Torque  
Momento torcente  
4 Nm



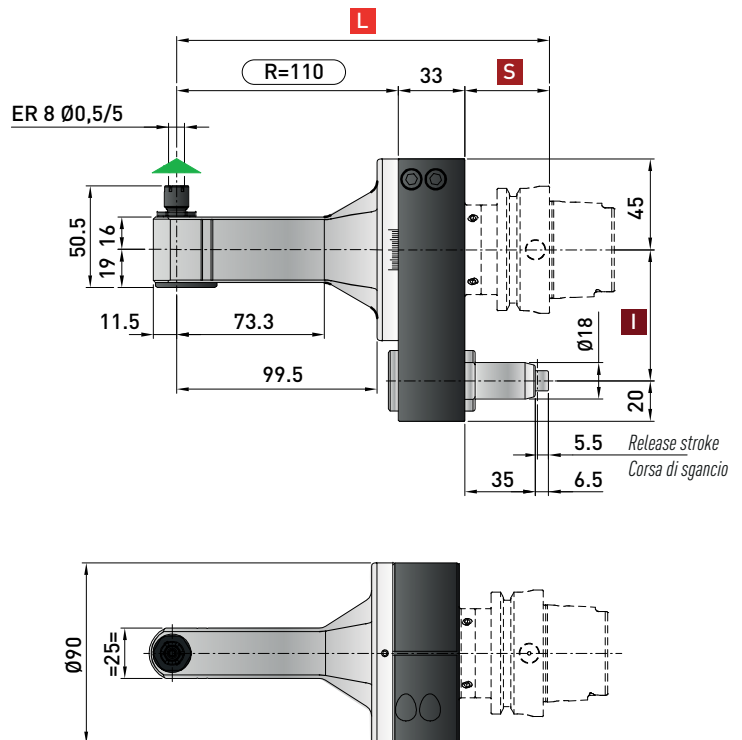
Weight  
Peso  
4 kg



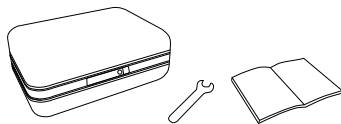
Collet  
Pinza  
ER-8 (ø 0,5/5 mm)



Minimum diameter  
without tool  
Diametro minimo  
senza utensile



### \* STANDARD EQUIPMENT includes:



Retaining block / Tassello di ritegno / Stop-Block  
**NOT INCLUDED - NON INCLUSO**



Direction of rotation same as machine spindle / senso di rotazione uguale al mandrino

Spindle / Cono	DIN 69871-CAT		MAS-BT		HSK		CAPTO	
	40-50	40-50	40	50	63-80	100	C5-C6	C8
Size / Grandezza	40-50	40-50	40	50	63-80	100	C5-C6	C8
<b>I</b>	65-80-(110*)	80-(110*)	65-80-(110*)	80-(110*)	65-80-(110*)	80-(110*)	65-80-(110*)	80-(110*)
<b>S</b>	35	35	35	41	42	45	38	40
<b>L</b>	178	178	178	184	185	188	181	183

Dual contact spindles available / Disponibilità coni a doppio contatto  
\*optional

Non interchangeable input drive shank / Coni di attacco non intercambiabili

### Option / Opzione



bar max  
**12**

Coolant through pin  
Adduzione refrigerante attraverso il perno



Ø mm max.  
**4-6**

Weldon output  
Weldon

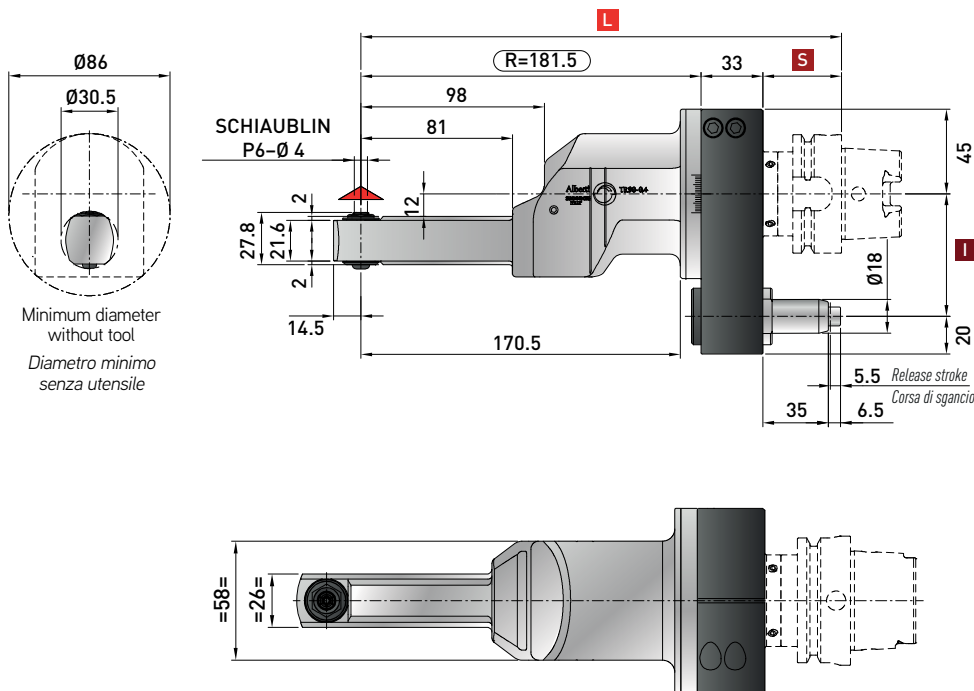
# TR90cn-0.4 Neo

## ACTR904C

### Technical data

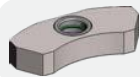
Caratteristiche tecniche

-  **Ratio**  
Rapporto  
**1:2.5 SPEEDER**
-  **RPM**  
Velocità  
**8.000 min<sup>-1</sup> OUTPUT**
-  **Max. axial load**  
Max. carico assiale  
**135 N**
-  **Torque**  
Momento torcente  
**4 Nm**
-  **Weight**  
Peso  
**5 kg**
-  **Collet**  
Pinza  
**SCHAUBLIN P6**




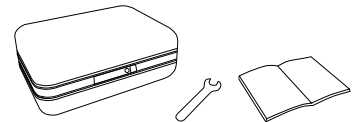
Minimum diameter without tool  
Diametro minimo senza utensile

**\* STANDARD EQUIPMENT includes:**



Retaining block / Tassello di ritegno / Stop-Block  
**NOT INCLUDED - NON INCLUSO**

 Direction of rotation same as machine spindle / senso di rotazione uguale al mandrino



Spindle / Cono	DIN 69871-CAT		MAS-BT		HSK		CAPTO	
	40-50	40-50	40	50	63-80	100	C5-C6	C8
Size / Grandezza	65-80-(110*)	80-(110*)	65-80-(110*)	80-(110*)	65-80-(110*)	80-(110*)	65-80-(110*)	80-(110*)
<b>I</b>	35	35	35	41	42	45	38	40
<b>S</b>	249.5	249.5	249.5	255.5	256.5	259.5	252.5	254.5

Dual contact spindles available / Disponibilità coni a doppio contatto  
\*optional

Non interchangeable input drive shank / Coni di attacco non intercambiabili

### Option / Opzione



bar max  
**100**

Coolant through spindle  
Adduzione refrigerante attraverso il cono



bar max  
**12**

Coolant through pin  
Adduzione refrigerante attraverso il perno

# T90cn-0.5C Neo

ACT9005C

## Technical data

Caratteristiche tecniche



Ratio  
Rapporto  
1:1



RPM  
Velocità  
8.000 min<sup>-1</sup>



Max. axial load  
Max. carico assiale  
150 N



Torque  
Momento torcente  
10 Nm



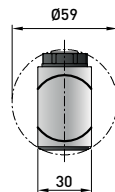
Weight  
Peso  
4 kg



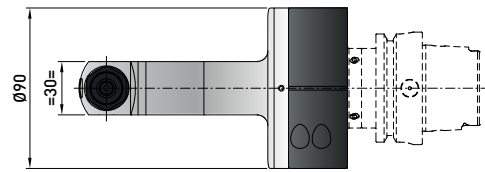
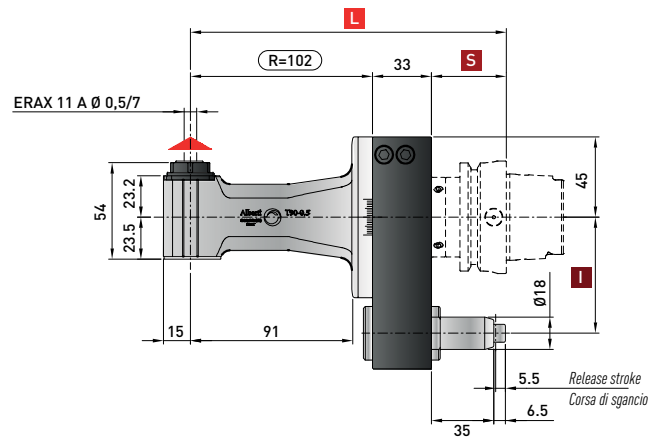
Tapping  
Maschiatura  
Max. M5



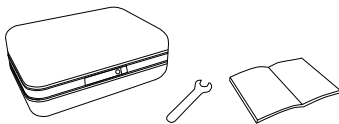
Collet  
Pinza  
ERAX-11 (ø 0,5/7 mm)



Minimum diameter  
without tool  
Diametro minimo  
senza utensile



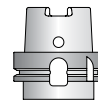
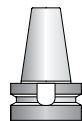
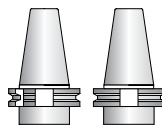
**\* STANDARD EQUIPMENT includes:**



Retaining block / Tassello di ritegno / Stop-Block  
**NOT INCLUDED - NON INCLUSO**



▲ Direction of rotation opposite as machine spindle / senso di rotazione contrario al mandrino



Spindle / Cono	DIN 69871-CAT		MAS-BT		HSK		CAPTO	
Size / Grandezza	40-50	40-50	40	50	63-80	100	C5-C6	C8
<b>I</b>	65-80-(110*)	80-(110*)	65-80-(110*)	80-(110*)	65-80-(110*)	80-(110*)	65-80-(110*)	80-(110*)
<b>S</b>	35	35	35	41	42	45	38	40
<b>L</b>	170	170	170	176	177	180	173	175

Dual contact spindles available / Disponibilità coni a doppio contatto

\*optional

## Option / Opzione



bar max  
**12**

Coolant through pin  
Refrigerante attraverso il perno



Ø mm max.  
**6**

Weldon output  
Weldon

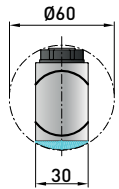
# T90cn-0.5C Neo IC

ACT9005C.IC

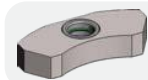
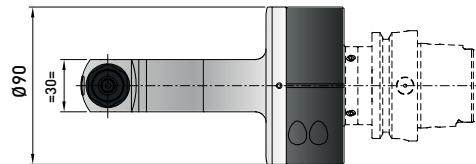
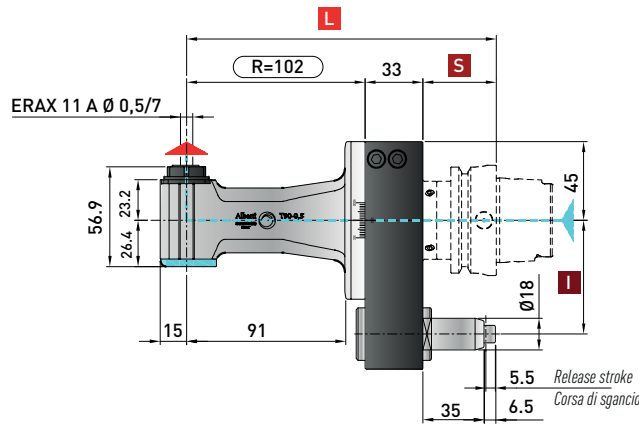
## Technical data

Caratteristiche tecniche

- Ratio**  
Rapporto  
**1:1**
- RPM**  
Velocità  
**10.000 min<sup>-1</sup>** **DRY**  
Running  
**8.000 min<sup>-1</sup>**
- Max. axial load**  
Max. carico assiale  
**150 N**
- Torque**  
Momento torcente  
**10 Nm**
- Weight**  
Peso  
**4 kg**
- Tapping**  
Maschiatura  
**Max. M5**
- Collet**  
Pinza  
**ERAX-11 (ø 0,5/7 mm)**



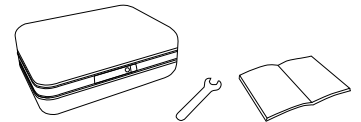
Minimum diameter  
without tool  
Diametro minimo  
senza utensile



Retaining block / Tassello di ritegno / Stop-Block  
**NOT INCLUDED - NON INCLUSO**

- Direction of rotation opposite as machine spindle / *sensò di rotazione contrario al mandrino*
- Input coolant max. 1450 PSI / *ingresso refrigerante max. 100 bar*  
Dry rotation is possible / *rotazione a secco possibile*

**\* STANDARD EQUIPMENT includes:**



Spindle / Cono Size / Grandezza	DIN 69871-CAT		MAS-BT		HSK		CAPTO	
	40-50	40-50	40	50	63-80	100	C5-C6	C8
<b>I</b>	65-80-(110*)	80-(110*)	65-80-(110*)	80-(110*)	65-80-(110*)	80-(110*)	65-80-(110*)	80-(110*)
<b>S</b>	35	35	35	41	42	45	38	40
<b>L</b>	170	170	170	176	177	180	173	175

Dual contact spindles available / *Disponibilità coni a doppio contatto*  
\*optional

## Option / Opzione



Ø mm max.  
**6**

Weldon output  
Weldon



# T90cn-0.5L Neo

ACT9005L

## Technical data

Caratteristiche tecniche



Ratio  
Rapporto  
1:1



RPM  
Velocità  
8.000 min<sup>-1</sup>



Max. axial load  
Max. carico assiale  
150 N



Torque  
Momento torcente  
10 Nm



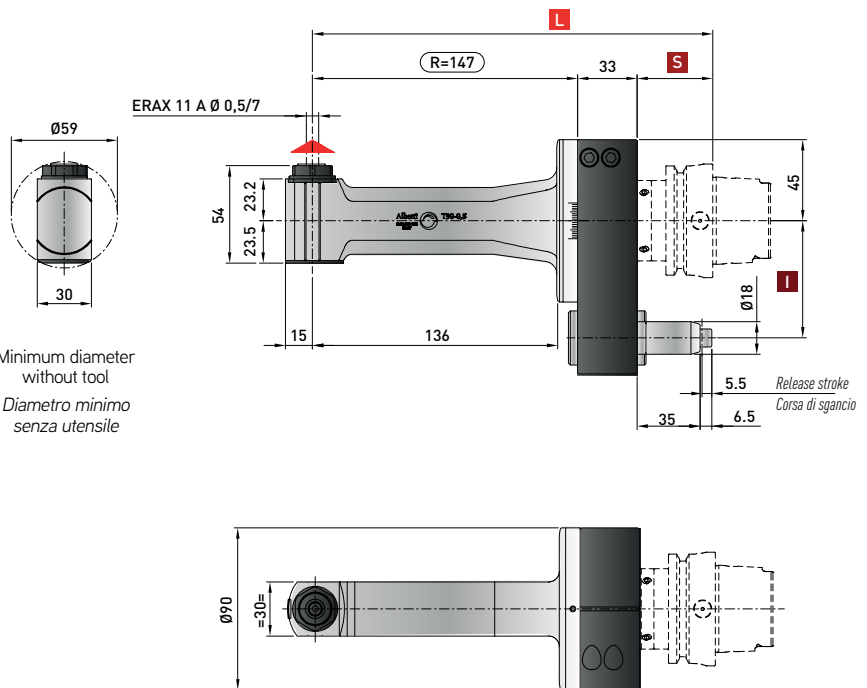
Weight  
Peso  
4.5 kg



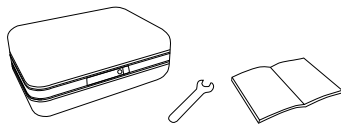
Tapping  
Maschiatura  
Max. M5



Collet  
Pinza  
ERAX-11 (ø 0,5/7 mm)



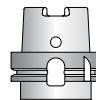
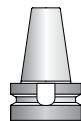
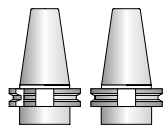
### \* STANDARD EQUIPMENT includes:



Retaining block / Tassello di ritegno / Stop-Block  
**NOT INCLUDED - NON INCLUSO**



▲ Direction of rotation opposite as machine spindle / senso di rotazione contrario al mandrino



Spindle / Cono	DIN 69871-CAT		MAS-BT		HSK		CAPTO	
Size / Grandezza	40-50	40-50	40	50	63-80	100	C5-C6	C8
<b>I</b>	65-80-(110*)	80-(110*)	65-80-(110*)	80-(110*)	65-80-(110*)	80-(110*)	65-80-(110*)	80-(110*)
<b>S</b>	35	35	35	41	42	45	38	40
<b>L</b>	215	215	215	221	222	225	218	220

Dual contact spindles available / Disponibilità coni a doppio contatto

\*optional

### Option / Opzione



bar max  
**12**

Coolant through pin  
Refrigerante attraverso il perno



Ø mm max.  
**6**

Weldon output  
Weldon

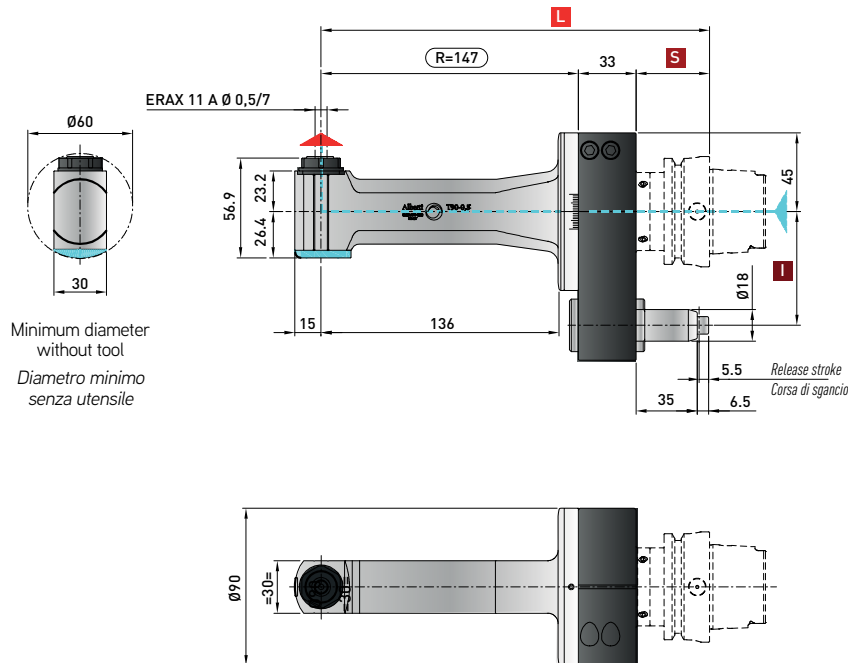
# T90cn-0.5L Neo IC

## ACT9005L.IC

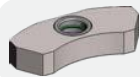
### Technical data

Caratteristiche tecniche

- Ratio**  
 Rapporto  
**1:1**
- RPM**  
 Velocità  
**10.000 min<sup>-1</sup>**
- DRY**  
 Running  
**8.000 min<sup>-1</sup>**
- Max. axial load**  
 Max. carico assiale  
**150 N**
- Torque**  
 Momento torcente  
**10 Nm**
- Weight**  
 Peso  
**4.5 kg**
- Tapping**  
 Maschiatura  
**Max. M5**
- Collet**  
 Pinza  
**ERAX-11 (ø 0,5/7 mm)**



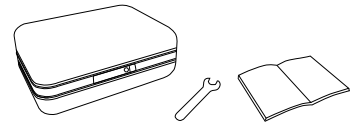
Minimum diameter without tool  
 Diametro minimo senza utensile



Retaining block / Tassello di ritegno / Stop-Block  
**NOT INCLUDED - NON INCLUSO**

- Direction of rotation opposite as machine spindle / senso di rotazione contrario al mandrino
- Input coolant max. 1450 PSI / ingresso refrigerante max. 100 bar  
 Dry rotation is possible / rotazione a secco possibile

**\* STANDARD EQUIPMENT includes:**



Spindle / Cono	DIN 69871-CAT		MAS-BT		HSK		CAPTO	
	40-50	40-50	40	50	63-80	100	C5-C6	C8
<b>I</b>	65-80-(110*)	80-(110*)	65-80-(110*)	80-(110*)	65-80-(110*)	80-(110*)	65-80-(110*)	80-(110*)
<b>S</b>	35	35	35	41	42	45	38	40
<b>L</b>	215	215	215	221	222	225	218	220

Dual contact spindles available / Disponibilità coni a doppio contatto

\*optional

### Option / Opzione



Ø mm max.  
**6**

Welding output  
 Weldon

# TR90cn-0.5 Neo

ACTR905C

## Technical data

Caratteristiche tecniche



Ratio  
Rapporto  
**1:2 SPEEDER**



RPM  
Velocità  
**8.000 min<sup>-1</sup> OUTPUT**



Max. axial load  
Max. carico assiale  
**200 N**



Torque  
Momento torcente  
**10 Nm**



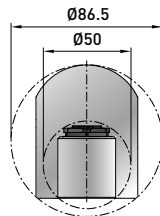
Weight  
Peso  
**5.6 kg**



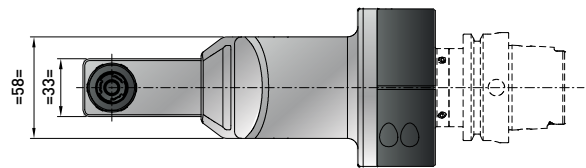
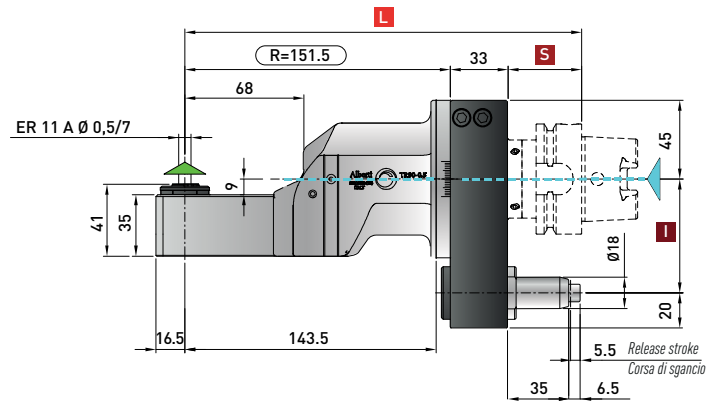
Tapping  
Maschiatura  
**Max. M5**



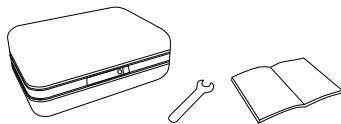
Collet  
Pinza  
**ERAX-11 (ø 0,5/7 mm)**



Minimum diameter  
without tool  
*Diametro minimo  
senza utensile*



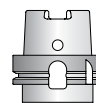
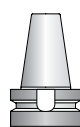
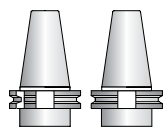
### \* STANDARD EQUIPMENT includes:



Retaining block / Tassello di ritegno / Stop-Block  
**NOT INCLUDED - NON INCLUSO**



- Direction of rotation same as machine spindle / *senso di rotazione uguale al mandrino*
- Input coolant max. 1450 PSI / *ingresso refrigerante max. 100 bar*  
Dry rotation is possible / *rotazione a secco possibile*



Spindle / Cono	DIN69871-CAT		MAS-BT		HSK		CAPTO	
Size / Grandezza	40-50	40-50	40	50	63-80	100	C5-C6	C8
<b>I</b>	65-80-(110*)	80-(110*)	65-80-(110*)	80-(110*)	65-80-(110*)	80-(110*)	65-80-(110*)	80-(110*)
<b>S</b>	35	35	35	41	42	45	38	40
<b>L</b>	219.5	219.5	219.5	225.5	226.5	229.5	222.5	224.5

Dual contact spindles available / *Disponibilità coni a doppio contatto*  
\*optional

**Non interchangeable input drive shank / Coni di attacco non intercambiabili**

### Option / Opzione



bar max  
**12**

Coolant through pin  
*Adduzione refrigerante attraverso il perno*



bar max  
**100**

Coolant through spindle  
*Adduzione refrigerante attraverso il cono*

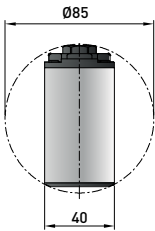
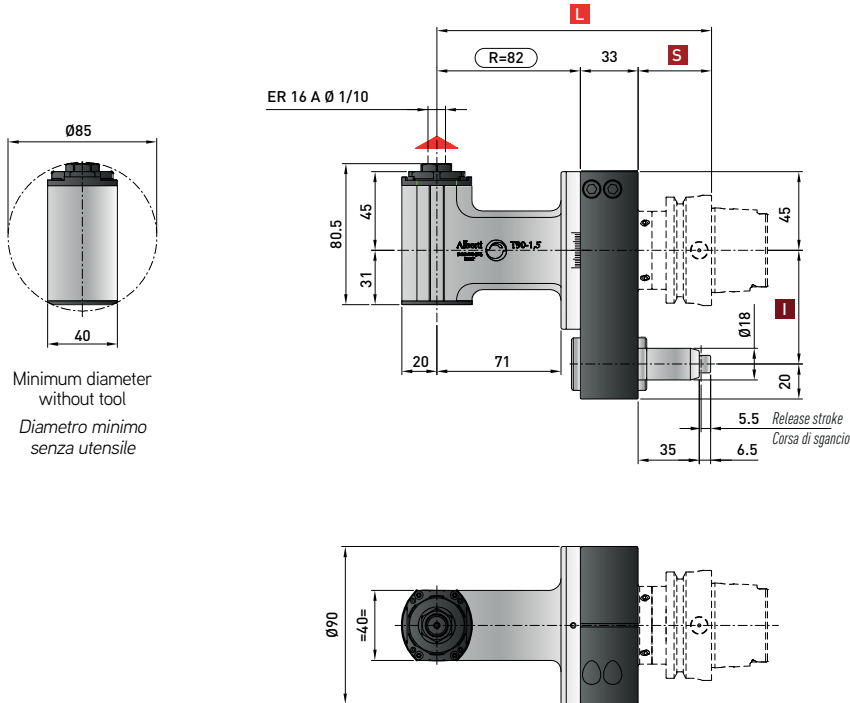
# T90cn-1.5C Neo

## ACT9015C

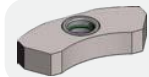
### Technical data

Caratteristiche tecniche


-  **Ratio**  
Rapporto  
**1:1**
-  **RPM**  
Velocità  
**8.000 min<sup>-1</sup>**
-  **Max. axial load**  
Max. carico assiale  
**250 N**
-  **Torque**  
Momento torcente  
**25 Nm**
-  **Weight**  
Peso  
**4.3 kg**
-  **Tapping**  
Maschiatura  
**Max. M6**
-  **Collet**  
Pinza  
**ER-16A (ø 1/10 mm)**



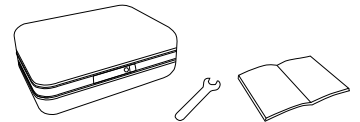
Minimum diameter without tool  
Diametro minimo senza utensile



Retaining block / Tassello di ritegno / Stop-Block  
**NOT INCLUDED - NON INCLUSO**

 Direction of rotation opposite as machine spindle / senso di rotazione contrario al mandrino

**\* STANDARD EQUIPMENT includes:**



Spindle / Cono	DIN 69871-CAT		MAS-BT		HSK		CAPTO	
	40-50	40-50	40	50	63-80	100	C5-C6	C8
Size / Grandezza	40-50	40-50	40	50	63-80	100	C5-C6	C8
<b>I</b>	65-80-(110*)	80-(110*)	65-80-(110*)	80-(110*)	65-80-(110*)	80-(110*)	65-80-(110*)	80-(110*)
<b>S</b>	35	35	35	41	42	45	38	40
<b>L</b>	150	150	150	156	157	160	153	155

Dual contact spindles available / Disponibilità coni a doppio contatto

\*optional

### Option / Opzione



bar max  
**12**

Coolant through pin  
Refrigerante attraverso il perno



Ø mm  
**13**

Arbor output  
Porta fresa



Ø mm max.  
**10**

Weldon output  
Weldon



**ER-16/ER-11**

Double output  
Doppia uscita

# T90cn-1.5C Neo IC

ACT9015C.IC

## Technical data

Caratteristiche tecniche



Ratio  
Rapporto  
1:1



RPM  
Velocità  
10.000 min<sup>-1</sup> DRY  
Running  
8.000 min<sup>-1</sup>



Max. axial load  
Max. carico assiale  
250 N



Torque  
Momento torcente  
25 Nm



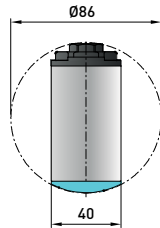
Weight  
Peso  
4.3 kg



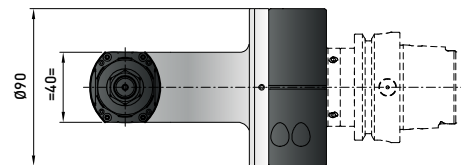
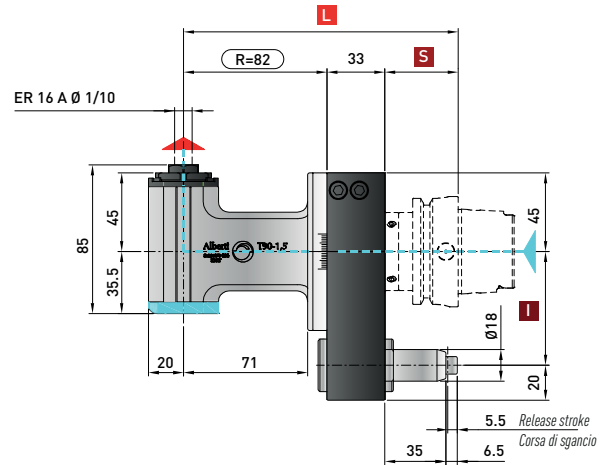
Tapping  
Maschiatura  
Max. M6



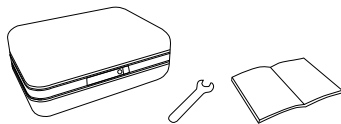
Collet  
Pinza  
ER-16A (ø 1/10 mm)



Minimum diameter  
without tool  
Diametro minimo  
senza utensile



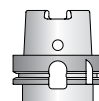
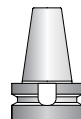
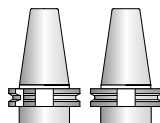
### \* STANDARD EQUIPMENT includes:



Retaining block / Tassello di ritegno / Stop-Block  
**NOT INCLUDED - NON INCLUSO**



- Direction of rotation opposite as machine spindle / senso di rotazione contrario al mandrino
- Input coolant max. 1450 PSI / ingresso refrigerante max. 100 bar  
Dry rotation is possible / rotazione a secco possibile



Spindle / Cono	DIN 69871-CAT		MAS-BT		HSK		CAPTO	
Size / Grandezza	40-50	40-50	40	50	63-80	100	C5-C6	C8
<b>I</b>	65-80-(110*)	80-(110*)	65-80-(110*)	80-(110*)	65-80-(110*)	80-(110*)	65-80-(110*)	80-(110*)
<b>S</b>	35	35	35	41	42	45	38	40
<b>L</b>	150	150	150	156	157	160	153	155

Dual contact spindles available / Disponibilità coni a doppio contatto

\*optional

### Option / Opzione



Ø mm  
13

Arbor output  
Porta fresa



Ø mm max.  
10

Weldon output  
Weldon

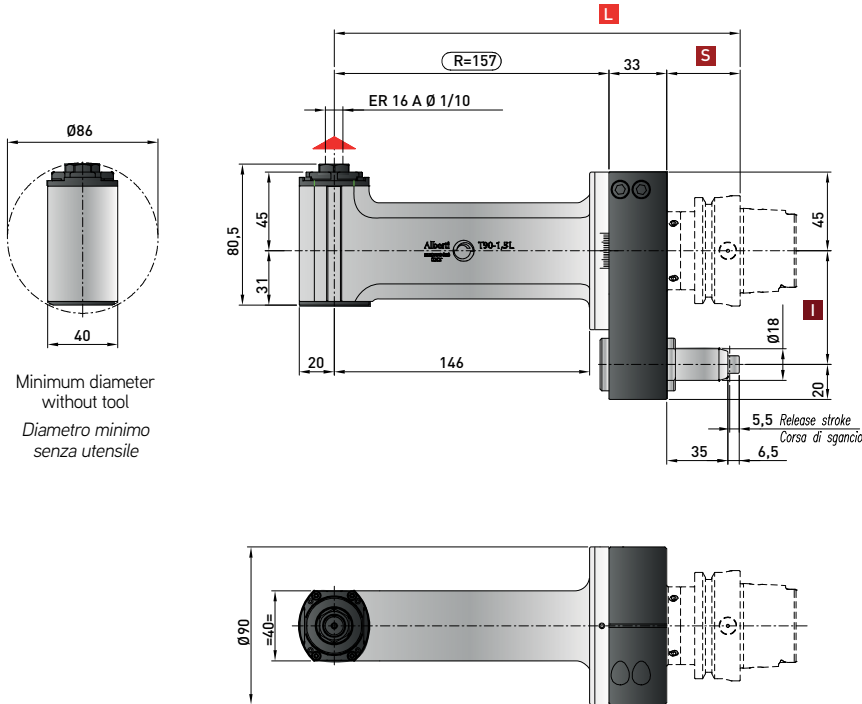
# T90cn-1.5L Neo

## ACT9015L

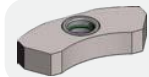
### Technical data

Caratteristiche tecniche

- Ratio**  
Rapporto  
**1:1**
- RPM**  
Velocità  
**8.000 min<sup>-1</sup>**
- Max. axial load**  
Max. carico assiale  
**250 N**
- Torque**  
Momento torcente  
**25 Nm**
- Weight**  
Peso  
**5.2 kg**
- Tapping**  
Maschiatura  
**Max. M6**
- Collet**  
Pinza  
**ER-16A (ø 1/10 mm)**



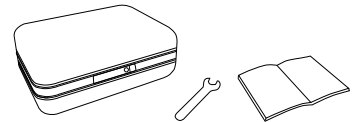
Minimum diameter  
without tool  
Diametro minimo  
senza utensile



Retaining block / Tassello di ritegno / Stop-Block  
**NOT INCLUDED - NON INCLUSO**

Direction of rotation opposite as machine spindle / senso di rotazione contrario al mandrino

**\* STANDARD EQUIPMENT includes:**



Spindle / Cono	DIN 69871-CAT		MAS-BT		HSK		CAPTO	
	40-50	40-50	40	50	63-80	100	C5-C6	C8
<b>I</b>	65-80-(110*)	80-(110*)	65-80-(110*)	80-(110*)	65-80-(110*)	80-(110*)	65-80-(110*)	80-(110*)
<b>S</b>	35	35	35	41	42	45	38	40
<b>L</b>	225	225	225	231	232	235	228	230

Dual contact spindles available/Disponibilità coni a doppio contatto

\*optional

### Option / Opzione



bar max  
**12**

Coolant through pin  
Refrigerante attraverso il perno



Ø mm  
**13**

Arbor output  
Porta fresa



Ø mm max.  
**10**

Weldon output  
Weldon



**ER-16/ER-11**

Double output  
Doppia uscita

# T90cn-1.5L Neo IC

ACT9015L.IC

## Technical data

Caratteristiche tecniche



Ratio  
Rapporto  
1:1



RPM  
Velocità  
10.000 min<sup>-1</sup>

DRY  
Running  
8.000 min<sup>-1</sup>



Max. axial load  
Max. carico assiale  
250 N



Torque  
Momento torcente  
25 Nm



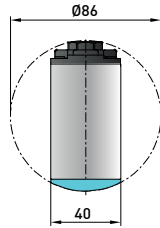
Weight  
Peso  
5.2 kg



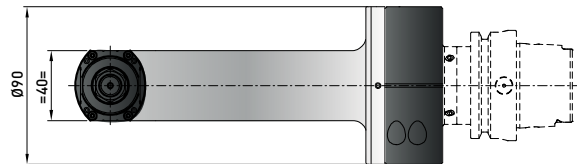
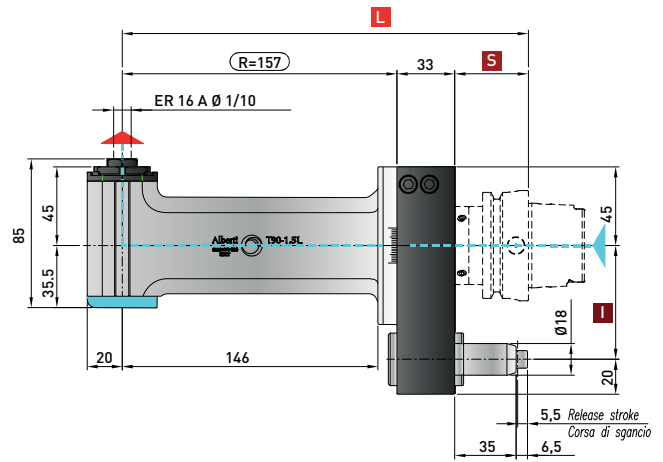
Tapping  
Maschiatura  
Max. M6



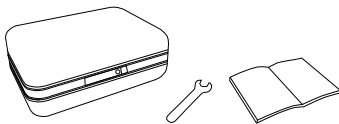
Collet  
Pinza  
ER-16A (ø 1/10 mm)



Minimum diameter  
without tool  
Diametro minimo  
senza utensile



### \* STANDARD EQUIPMENT includes:



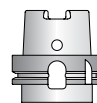
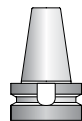
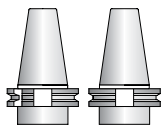
Retaining block / Tassello di ritegno / Stop-Block

NOT INCLUDED - NON INCLUSO



▲ Direction of rotation opposite as machine spindle / senso di rotazione contrario al mandrino

▲ Input coolant max. 1450 PSI / ingresso refrigerante max. 100 bar  
Dry rotation is possible / rotazione a secco possibile



Spindle / Cono	DIN 69871-CAT		MAS-BT		HSK		CAPTO	
Size / Grandezza	40-50	40-50	40	50	63-80	100	C5-C6	C8
<b>I</b>	65-80 -(110*)	80-(110*)	65-80 -(110*)	80-(110*)	65-80-(110*)	80-(110*)	65-80-(110*)	80-(110*)
<b>S</b>	35	35	35	41	42	45	38	40
<b>L</b>	225	225	225	231	232	235	228	230

Dual contact spindles available/Disponibilità coni a doppio contatto

\*optional

### Option / Opzione



Ø mm  
13

Arbor output  
Porta fresa



Ø mm max.  
10

Weldon output  
Weldon

# T90cn-1.5 2U

## ACT9015D

### Technical data

Caratteristiche tecniche



Ratio  
Rapporto  
**1:1**



RPM  
Velocità  
**8.000 min<sup>-1</sup>**



Max. axial load  
Max. carico assiale  
**450 N**



Torque  
Momento torcente  
**25 Nm**



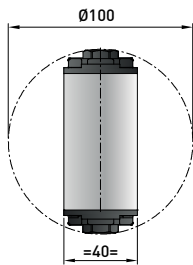
Weight  
Peso  
**4.5 kg**



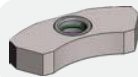
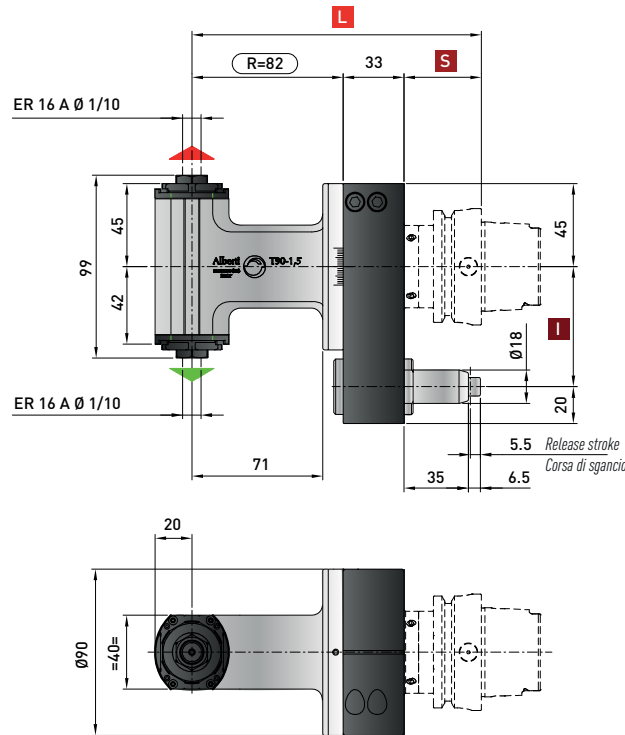
Tapping  
Maschiatura  
**Max. M6**



Collet  
Pinza  
**ER-16A (ø 1/10 mm)**  
**ER-16A (ø 1/10 mm)**



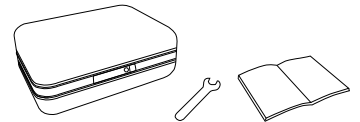
Minimum diameter  
without tool  
Diametro minimo  
senza utensile



Retaining block / Tassello di ritegno / Stop-Block  
**NOT INCLUDED - NON INCLUSO**

- Direction of rotation same as machine spindle / senso di rotazione uguale al mandrino
- Direction of rotation opposite as machine spindle / senso di rotazione contrario al mandrino

**\* STANDARD EQUIPMENT includes:**



Spindle / Cono	DIN 69871-CAT		MAS-BT		HSK		CAPTO	
	40-50	40-50	40	50	63-80	100	C5-C6	C8
I	65-80-(110*)	80-(110*)	65-80-(110*)	80-(110*)	65-80-(110*)	80-(110*)	65-80-(110*)	80-(110*)
S	35	35	35	41	42	45	38	40
L	150	150	150	156	157	160	153	155

Dual contact spindles available / Disponibilità coni a doppio contatto

\*optional

Non interchangeable input drive shank / Coni di attacco non intercambiabili

### Option / Opzione



bar max  
**12**

Coolant through pin  
Refrigerante attraverso il perno



# TR90cn-1.5 Neo

ACTR915C

## Technical data

Caratteristiche tecniche



Ratio  
Rapporto  
**1.3:1 SPEEDER**



RPM  
Velocità  
**8.000 min<sup>-1</sup> OUTPUT**



Max. axial load  
Max. carico assiale  
**450 N**



Torque  
Momento torcente  
**15 Nm**



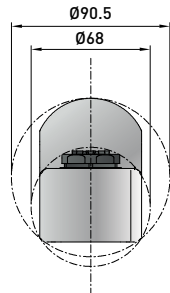
Weight  
Peso  
**7 kg**



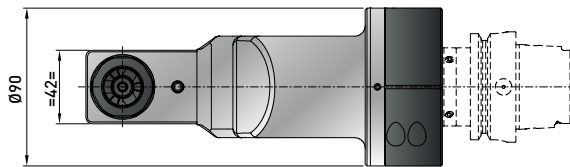
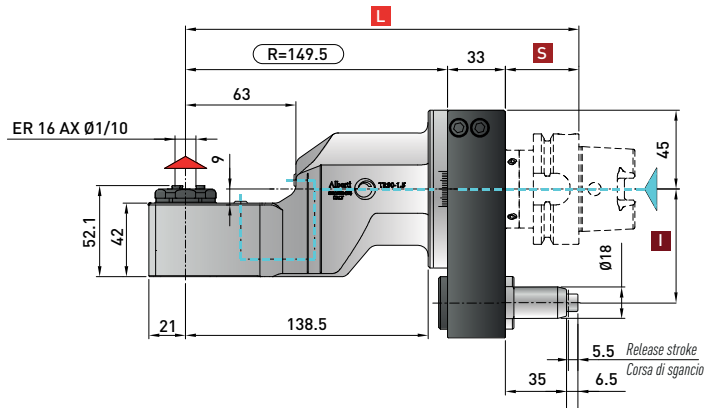
Tapping  
Maschiatura  
**Max. M6**



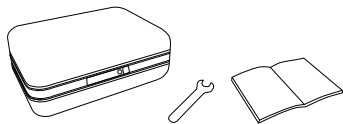
Collet  
Pinza  
**ERAX-16 (ø 1/10 mm)**



Minimum diameter without tool  
Diametro minimo senza utensile



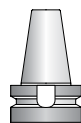
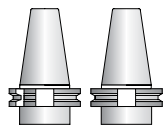
### \* STANDARD EQUIPMENT includes:



Retaining block / Tassello di ritegno / Stop-Block  
**NOT INCLUDED - NON INCLUSO**



- Direction of rotation opposite as machine spindle / senso di rotazione contrario al mandrino
- Input coolant max. 1450 PSI / ingresso refrigerante max. 100 bar  
Dry rotation is possible / rotazione a secco possibile



Spindle / Cono	DIN 69871-CAT		MAS-BT		HSK		CAPTO	
Size / Grandezza	40-50	40-50	40	50	63-80	100	C5-C6	C8
<b>I</b>	65-80-(110*)	80-(110*)	65-80-(110*)	80-(110*)	65-80-(110*)	80-(110*)	65-80-(110*)	80-(110*)
<b>S</b>	35	35	35	41	42	45	38	40
<b>L</b>	217.5	217.5	217.5	223.5	224.5	227.5	220.5	222.5

Dual contact spindles available / Disponibilità coni a doppio contatto  
\*optional

Non interchangeable input drive shank / Coni di attacco non intercambiabili

### Option / Opzione



bar max  
**12**

Coolant through pin  
Adduzione refrigerante attraverso il perno



bar max  
**100**

Coolant through spindle  
Adduzione refrigerante attraverso il cono

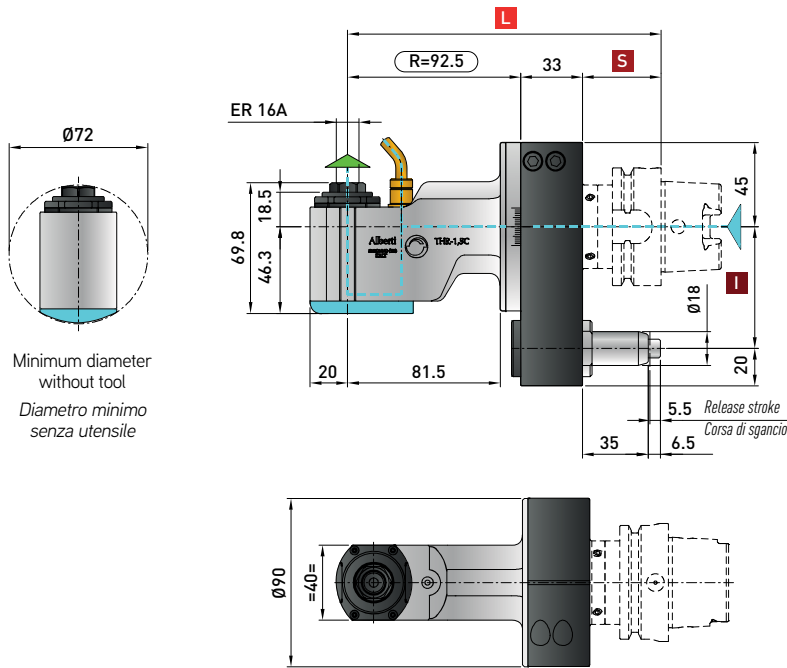
# THRcn-1.5 Neo IC

## ACTHR915C.IC

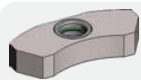
### Technical data

Caratteristiche tecniche

- Ratio**  
Rapporto  
**1:1**
- RPM**  
Velocità  
**10.000 min<sup>-1</sup>** | **DRY**  
Running  
**8.000 min<sup>-1</sup>**
- Max. axial load**  
Max. carico assiale  
**250 N**
- Torque**  
Momento torcente  
**15 Nm**
- Weight**  
Peso  
**4.2 kg**
- Tapping**  
Maschiatura  
**Max. M6**
- Collet**  
Pinza  
**ER-16A (ø 1/10 mm)**

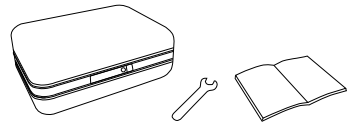


Minimum diameter  
without tool  
*Diametro minimo  
senza utensile*



Retaining block / Tassello di ritegno / Stop-Block  
**NOT INCLUDED - NON INCLUSO**

- Direction of rotation same as machine spindle / *senso di rotazione uguale al mandrino*
- Input coolant max. 1450 PSI / *ingresso refrigerante max. 100 bar*  
Dry rotation is possible / *rotazione a secco possibile*



**\* STANDARD EQUIPMENT includes:**

Spindle / Cono	DIN 69871-CAT		MAS-BT		HSK		CAPTO	
	40-50	40-50	40	50	63-80	100	C5-C6	C8
Size / Grandezza	65-80-(110*)	80-(110*)	65-80-(110*)	80-(110*)	65-80-(110*)	80-(110*)	65-80-(110*)	80-(110*)
<b>I</b>	35	35	35	41	42	45	38	40
<b>S</b>	160,5	160,5	160,5	166,5	167,5	170,5	163,5	165,5

Dual contact spindles available / *Disponibilità coni a doppio contatto*

\*optional

### Option / Opzione



Ø mm  
**13**

Arbor output  
*Porta fresa*



Ø mm max.  
**10**

Weldon output  
*Weldon*

# TCUcn-1.5 Neo

ACTCU15C

## Technical data

Caratteristiche tecniche



Ratio  
Rapporto  
1:1



RPM  
Velocità  
4.000 min<sup>-1</sup>



Max. axial load  
Max. carico assiale  
250 N



Torque  
Momento torcente  
12 Nm



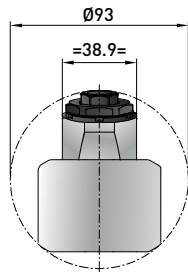
Weight  
Peso  
4.5 kg



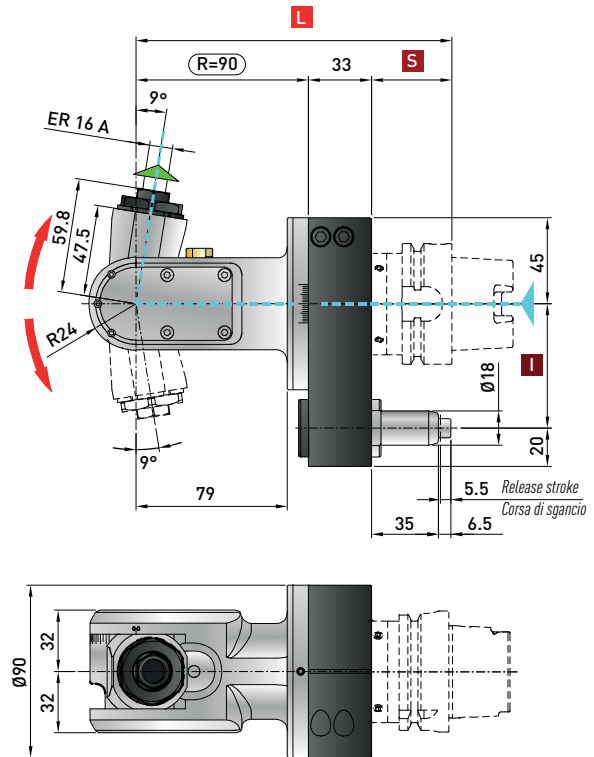
Tapping  
Maschiatura  
Max. M6



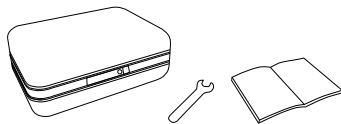
Collet  
Pinza  
ER-16A (ø 1/10 mm)



Minimum diameter  
without tool  
Diametro minimo  
senza utensile



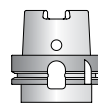
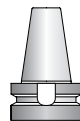
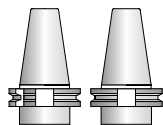
### \* STANDARD EQUIPMENT includes:



Retaining block / Tassello di ritengo / Stop-Block  
**NOT INCLUDED - NON INCLUSO**



- Direction of rotation same as machine spindle / senso di rotazione uguale al mandrino
- Input coolant max. 1450 PSI / ingresso refrigerante max. 100 bar
- Dry rotation is possible / rotazione a secco possibile



Spindle / Cono	DIN 69871-CAT		MAS-BT		HSK		CAPTO	
Size / Grandezza	40-50	40-50	40	50	63-80	100	C5-C6	C8
<b>I</b>	65-80-(110*)	80-(110*)	65-80-(110*)	80-(110*)	65-80-(110*)	80-(110*)	65-80-(110*)	80-(110*)
<b>S</b>	35	35	35	41	42	45	38	40
<b>L</b>	158	158	158	164	165	168	161	163

Dual contact spindles available / Disponibilità coni a doppio contatto  
\*optional

### Option / Opzione



bar max  
**12**

Coolant through pin  
Refrigerante attraverso il perno



bar max  
**100**

Coolant through spindle  
Adduzione refrigerante attraverso il cono



**+/- 95°**

Angle  
Angolo



every  
**5°**

Fixed positioning  
Posizionamento fisso

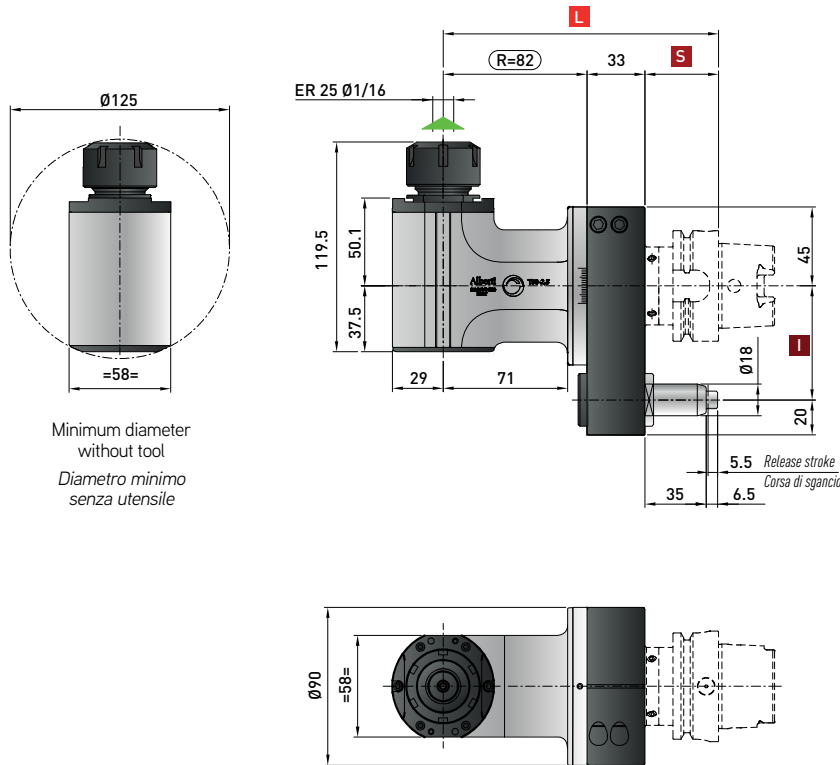
# T90cn-2.5C Neo

## ACT9025C

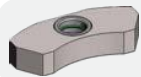
### Technical data

Caratteristiche tecniche

- Ratio**  
Rapporto  
**1:1**
- RPM**  
Velocità  
**6.000 min<sup>-1</sup>**
- Max. axial load**  
Max. carico assiale  
**510 N**
- Torque**  
Momento torcente  
**50 Nm**
- Weight**  
Peso  
**5.4 kg**
- Tapping**  
Maschiatura  
**Max. M12**
- Collet**  
Pinza  
**ER-25 (ø 1/16 mm)**



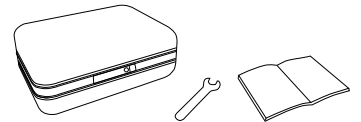
Minimum diameter  
without tool  
Diametro minimo  
senza utensile



Retaining block / Tassello di ritegno / Stop-Block  
**NOT INCLUDED - NON INCLUSO**

Direction of rotation same as machine spindle / senso di rotazione uguale al mandrino

**\* STANDARD EQUIPMENT includes:**



Spindle / Cono	DIN 69871-CAT		MAS-BT		HSK		CAPTO	
	40-50	40-50	40	50	63-80	100	C5-C6	C8
<b>I</b>	65-80-(110*)	80-(110*)	65-80-(110*)	80-(110*)	65-80-(110*)	80-(110*)	65-80-(110*)	80-(110*)
<b>S</b>	35	35	35	41	42	45	38	40
<b>L</b>	150	150	150	156	157	160	153	155

Dual contact spindles available / Disponibilità coni a doppio contatto

\*optional

### Option / Opzione

bar max <b>12</b>	<b>ER 32</b>	Ø mm <b>16</b>	Ø mm max. <b>16</b>	<b>HSK-32</b> Smart Change	<b>ER 25/ER 16</b>
Coolant through pin Refrigerante attraverso il perno	Collet Pinza	Arbor output Porta fresa	Weldon output Weldon	Quick Change Attacco rapido	Double output Doppia uscita

# T90cn-2.5C Neo IC

ACT9025C.IC

## Technical data

Caratteristiche tecniche



Ratio  
Rapporto  
1:1



RPM  
Velocità  
9.000 min<sup>-1</sup>

DRY  
Running  
6.000 min<sup>-1</sup>



Max. axial load  
Max. carico assiale  
510 N



Torque  
Momento torcente  
50 Nm



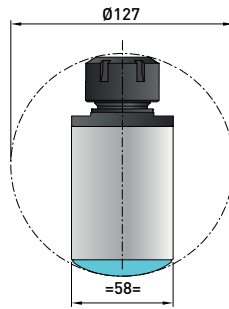
Weight  
Peso  
5.4 kg



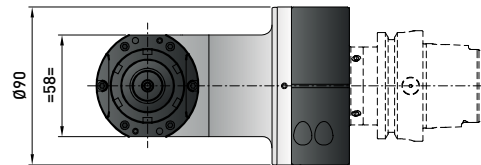
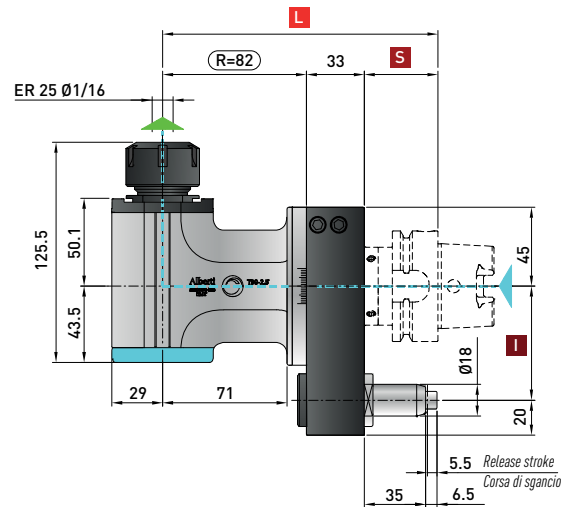
Tapping  
Maschiatura  
Max. M12



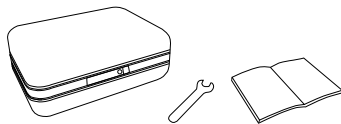
Collet  
Pinza  
ER-25 (ø 1/16 mm)



Minimum diameter  
without tool  
Diametro minimo  
senza utensile



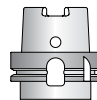
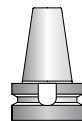
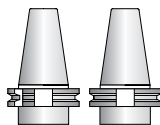
### \* STANDARD EQUIPMENT includes:



Retaining block / Tassello di ritegno / Stop-Block  
**NOT INCLUDED - NON INCLUSO**



- Direction of rotation same as machine spindle / senso di rotazione uguale al mandrino
- Input coolant max. 1450 PSI / ingresso refrigerante max. 100 bar  
Dry rotation is possible / rotazione a secco possibile



Spindle / Cono	DIN 69871-CAT		MAS-BT		HSK		CAPTO	
Size / Grandezza	40-50	40-50	40	50	63-80	100	C5-C6	C8
<b>I</b>	65-80-(110*)	80-(110*)	65-80-(110*)	80-(110*)	65-80-(110*)	80-(110*)	65-80-(110*)	80-(110*)
<b>S</b>	35	35	35	41	42	45	38	40
<b>L</b>	150	150	150	156	157	160	153	155

Dual contact spindles available / Disponibilità coni a doppio contatto  
\*optional

### Option / Opzione



Ø mm  
**16**

Arbor output  
Porta fresa



**ER 32**

Collet  
Pinza



Ø mm max.  
**16**

Weldon output  
Weldon



**HSK-32**  
Smart Change

Quick Change  
Attacco rapido

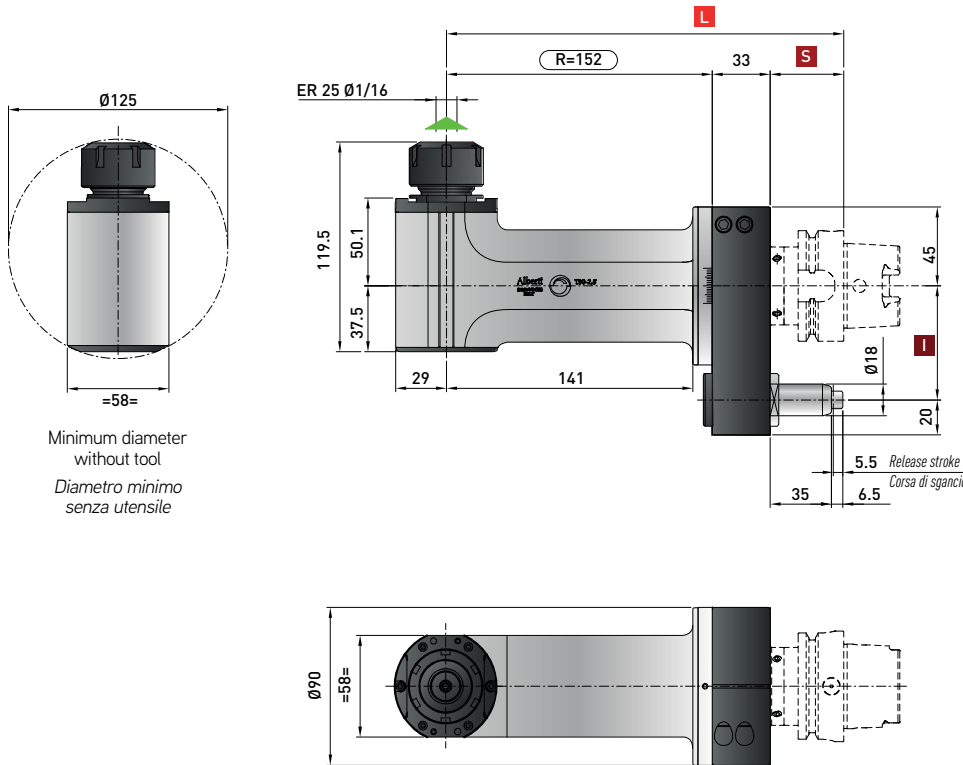
# T90cn-2.5L Neo

## ACT9025L

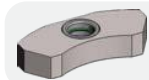
### Technical data

Caratteristiche tecniche

- Ratio**  
Rapporto  
**1:1**
- RPM**  
Velocità  
**6.000 min<sup>-1</sup>**
- Max. axial load**  
Max. carico assiale  
**510 N**
- Torque**  
Momento torcente  
**50 Nm**
- Weight**  
Peso  
**6.7 kg**
- Tapping**  
Maschiatura  
**Max. M12**
- Collet**  
Pinza  
**ER-25 (ø 1/16 mm)**



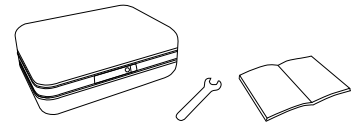
Minimum diameter  
without tool  
Diametro minimo  
senza utensile



Retaining block / Tassello di ritegno / Stop-Block  
**NOT INCLUDED - NON INCLUSO**

Direction of rotation same as machine spindle / senso di rotazione uguale al mandrino

**\* STANDARD EQUIPMENT includes:**



Spindle / Cono	DIN 69871-CAT		MAS-BT		HSK		CAPTO	
	40-50	40-50	40	50	63-80	100	C5-C6	C8
<b>I</b> Size / Grandezza	65-80-(110*)	80-(110*)	65-80-(110*)	80-(110*)	65-80-(110*)	80-(110*)	65-80-(110*)	80-(110*)
<b>S</b>	35	35	35	41	42	45	38	40
<b>L</b>	220	220	220	226	227	230	223	225

Dual contact spindles available/Disponibilità coni a doppio contatto

\*optional

### Option / Opzione

bar max <b>12</b>	<b>ER 32</b>	Ø mm <b>16</b>	Ø mm max. <b>16</b>	<b>HSK-32</b> Smart Change	<b>ER 25/ER 16</b>
Coolant through pin Refrigerante attraverso il perno	Collet Pinza	Arbor output Porta fresa	Weldon output Weldon	Quick Change Attacco rapido	Double output Doppia uscita

# T90cn-2.5L Neo IC

ACT9025L.IC

## Technical data

Caratteristiche tecniche



Ratio  
Rapporto  
1:1



RPM  
Velocità  
9.000 min<sup>-1</sup>

DRY  
Running  
6.000 min<sup>-1</sup>



Max. axial load  
Max. carico assiale  
510 N



Torque  
Momento torcente  
50 Nm



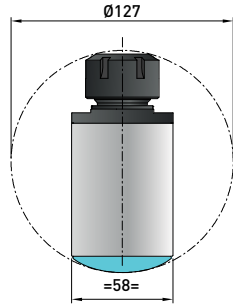
Weight  
Peso  
6.7 kg



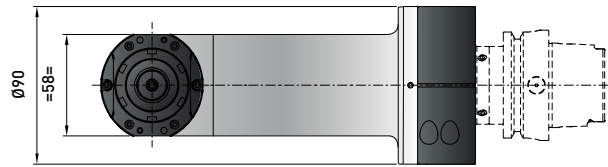
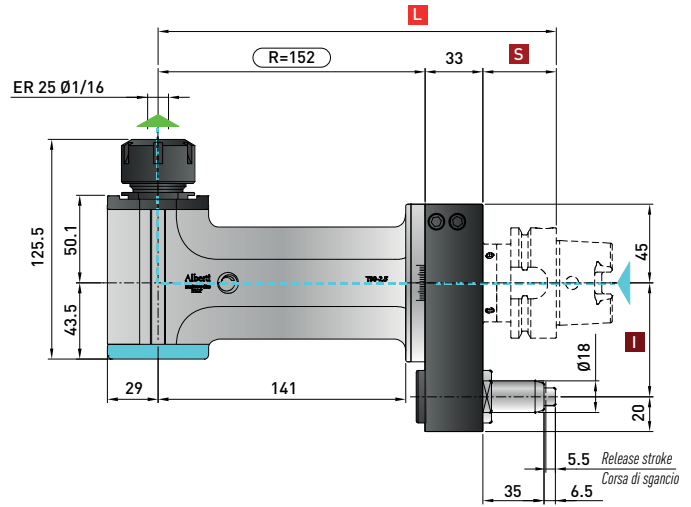
Tapping  
Maschiatura  
Max. M12



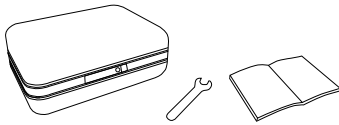
Collet  
Pinza  
ER-25 (ø 1/16 mm)



Minimum diameter  
without tool  
Diametro minimo  
senza utensile



### \* STANDARD EQUIPMENT includes:



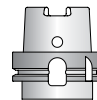
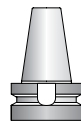
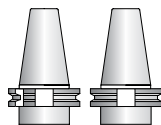
Retaining block / Tassello di ritegno / Stop-Block

NOT INCLUDED - NON INCLUSO



Direction of rotation same as machine spindle / senso di rotazione uguale al mandrino

Input coolant max. 1450 PSI / ingresso refrigerante max. 100 bar  
Dry rotation is possible / rotazione a secco possibile



Spindle / Cono	DIN 69871-CAT		MAS-BT		HSK		CAPTO	
Size / Grandezza	40-50	40-50	40	50	63-80	100	C5-C6	C8
<b>I</b>	65-80-(110*)	80-(110*)	65-80-(110*)	80-(110*)	65-80-(110*)	80-(110*)	65-80-(110*)	80-(110*)
<b>S</b>	35	35	35	41	42	45	38	40
<b>L</b>	220	220	220	226	227	230	223	225

Dual contact spindles available/Disponibilità coni a doppio contatto

\*optional

### Option / Opzione



Ø mm  
16

Arbor output  
Porta fresa



ER 32

Collet  
Pinza



Ø mm max.  
16

Weldon output  
Weldon



HSK-32  
Smart Change

Quick Change  
Attacco rapido

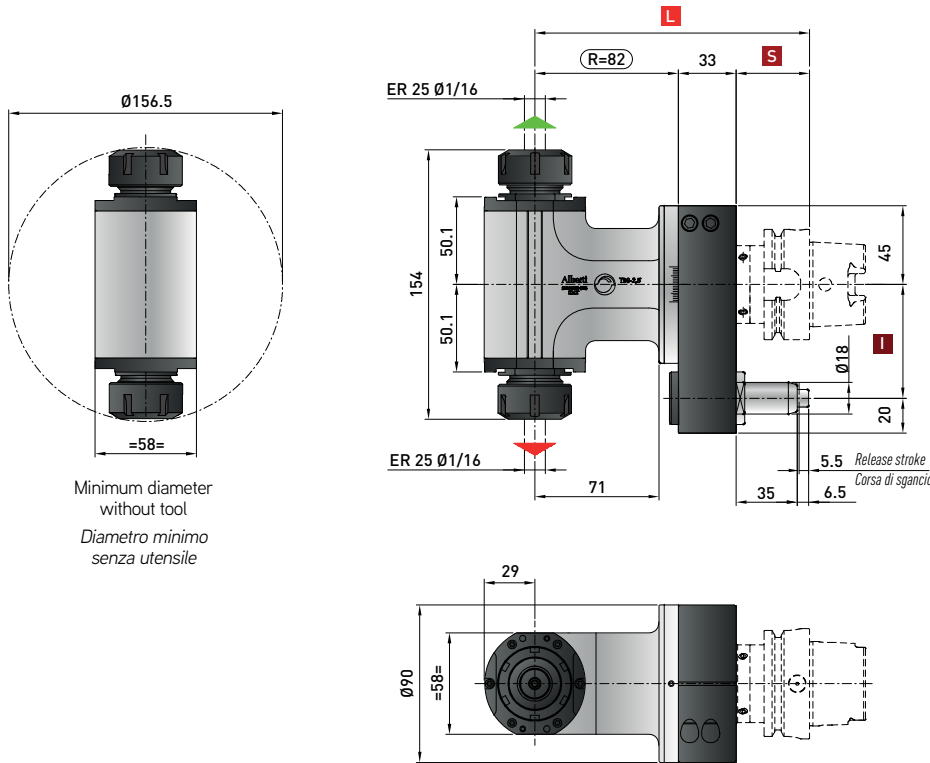
# T90cn-2.5 2U Neo

ACT9025D

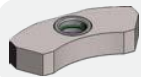
## Technical data

Caratteristiche tecniche

- Ratio**  
Rapporto  
**1:1**
- RPM**  
Velocità  
**6.000 min<sup>-1</sup>**
- Max. axial load**  
Max. carico assiale  
**510 N**
- Torque**  
Momento torcente  
**50 Nm**
- Weight**  
Peso  
**6.4 kg**
- Tapping**  
Maschiatura  
**Max. M12**
- Collet**  
Pinza  
**ER-25 (ø 1/16 mm)**  
**ER-25 (ø 1/16 mm)**



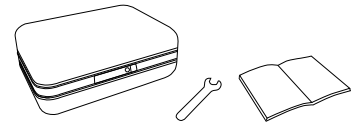
Minimum diameter  
without tool  
Diametro minimo  
senza utensile



Retaining block / Tassello di ritegno / Stop-Block  
**NOT INCLUDED - NON INCLUSO**

- Direction of rotation same as machine spindle / senso di rotazione uguale al mandrino
- Direction of rotation opposite as machine spindle / senso di rotazione contrario al mandrino

**\* STANDARD EQUIPMENT includes:**



Spindle / Cono	DIN 69871-CAT		MAS-BT		HSK		CAPTO	
	40-50	40-50	40	50	63-80	100	C5-C6	C8
<b>I</b>	65-80-(110*)	80-(110*)	65-80-(110*)	80-(110*)	65-80-(110*)	80-(110*)	65-80-(110*)	80-(110*)
<b>S</b>	35	35	35	41	42	45	38	40
<b>L</b>	150	150	150	156	157	160	153	155

Dual contact spindles available / Disponibilità coni a doppio contatto  
\*optional

Non interchangeable input drive shank / Coni di attacco non intercambiabili

## Option / Opzione



Ø mm  
**16**

Arbor output  
Porta fresa



**ER 32**

Collet  
Pinza



Ø mm max.  
**16**

Weldon output  
Weldon



bar max  
**12**

Coolant through pin  
Refrigerante attraverso il perno



# TR90cn-2.5 Neo

ACTR925C

## Technical data

Caratteristiche tecniche



Ratio  
Rapporto  
1:1



RPM  
Velocità  
6.000 min<sup>-1</sup>



Max. axial load  
Max. carico assiale  
510 N



Torque  
Momento torcente  
30 Nm



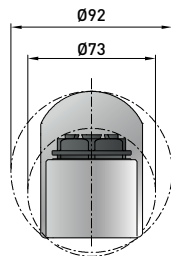
Weight  
Peso  
6.5 kg



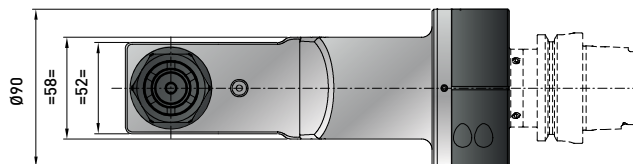
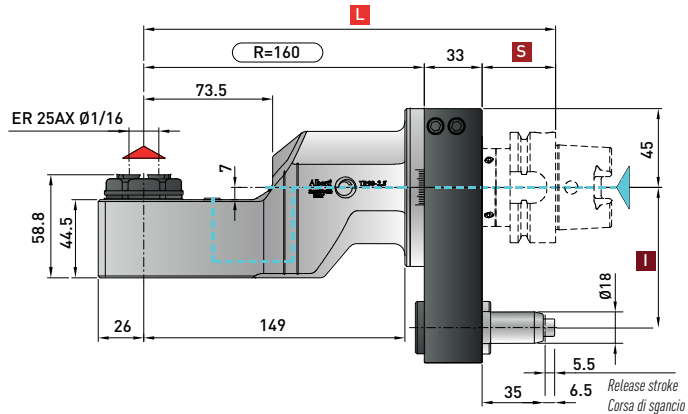
Tapping  
Maschiatura  
Max. M12



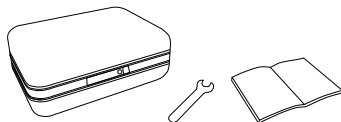
Collet  
Pinza  
ERAX-25 (Ø 1-16 mm)



Minimum diameter  
without tool  
Diametro minimo  
senza utensile



### \* STANDARD EQUIPMENT includes:

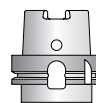
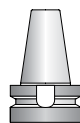
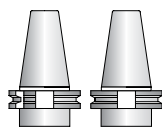


Retaining block / Tassello di ritegno / Stop-Block

NOT INCLUDED - NON INCLUSO



- Direction of rotation opposite as machine spindle / senso di rotazione contrario al mandrino
- Input coolant max. 1450 PSI / ingresso refrigerante max. 100 bar  
Dry rotation is possible / rotazione a secco possibile



Spindle / Cono	DIN 69871-CAT		MAS-BT		HSK		CAPTO	
Size / Grandezza	40-50	40-50	40	50	63-80	100	C5-C6	C8
<b>I</b>	65-80 -(110*)	80-(110*)	65-80 -(110*)	80-(110*)	65-80-(110*)	80-(110*)	65-80-(110*)	80-(110*)
<b>S</b>	35	35	35	41	42	45	38	40
<b>L</b>	228	228	228	234	235	238	231	233

Dual contact spindles available / Disponibilità coni a doppio contatto

\*optional

Non interchangeable input drive shank / Coni di attacco non intercambiabili

### Option / Opzione



bar max  
12

Coolant through pin  
Adduzione refrigerante attraverso il perno



bar max  
100

Coolant through spindle  
Refrigerante attraverso il cono

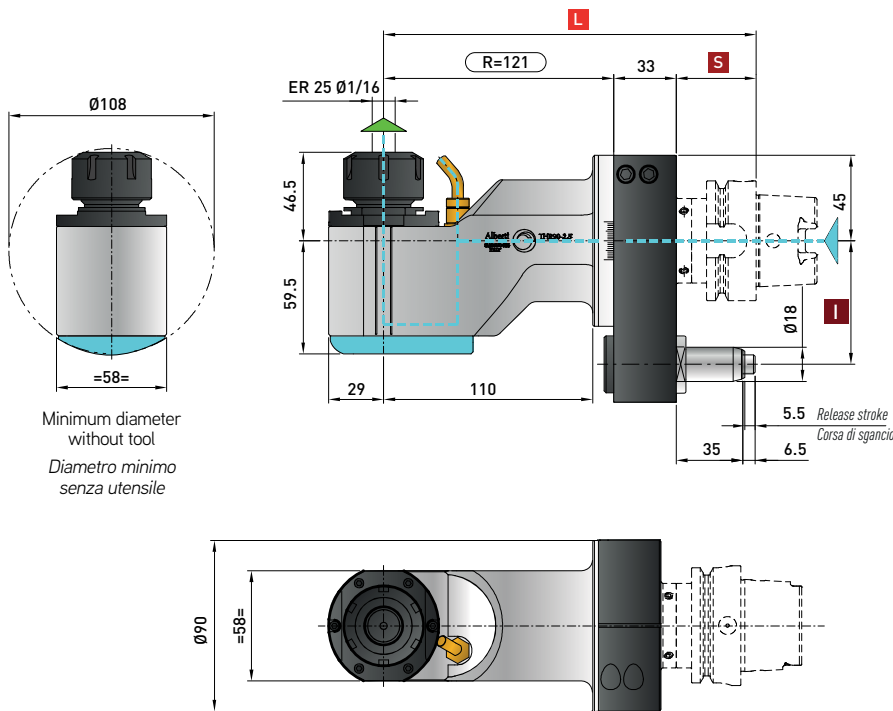
# THRcn-2.5 Neo IC

## ACTHR925C.IC

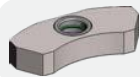
### Technical data

Caratteristiche tecniche

- Ratio**  
Rapporto  
**1:1**
- RPM**  
Velocità  
**9.000 min<sup>-1</sup>** | **DRY**  
Running  
**6.000 min<sup>-1</sup>**
- Max. axial load**  
Max. carico assiale  
**510 N**
- Torque**  
Momento torcente  
**30 Nm**
- Weight**  
Peso  
**6.5 kg**
- Tapping**  
Maschiatura  
**Max. M12**
- Collet**  
Pinza  
**ER-25 (ø 1/16 mm)**



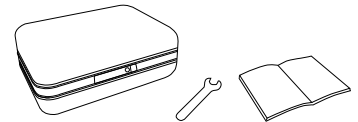
Minimum diameter  
without tool  
Diametro minimo  
senza utensile



Retaining block / Tassello di ritegno / Stop-Block  
**NOT INCLUDED - NON INCLUSO**

- Direction of rotation same as machine spindle / senso di rotazione uguale al mandrino
- Input coolant max. 1450 PSI / ingresso refrigerante max. 100 bar  
Dry rotation is possible / rotazione a secco possibile

**\* STANDARD EQUIPMENT includes:**



Spindle / Cono	DIN 69871-CAT		MAS-BT		HSK		CAPTO	
	40-50	40-50	40	50	63-80	100	C5-C6	C8
<b>I</b> Size / Grandezza	65-80-(110*)	80-(110*)	65-80-(110*)	80-(110*)	65-80-(110*)	80-(110*)	65-80-(110*)	80-(110*)
<b>S</b>	35	35	35	41	42	45	38	40
<b>L</b>	189	189	189	195	196	199	192	194

Dual contact spindles available / Disponibilità coni a doppio contatto

\*optional

### Option / Opzione



Ø mm  
**16**

Arbor output  
Porta fresa



**ER 32**

Collet  
Pinza



Ø mm max.  
**16**

Weldon output  
Weldon



**HSK-32**

Quick Change  
Attacco rapido

# TCUcn-2.5 Neo

ACTCU25C

## Technical data

Caratteristiche tecniche



Ratio  
Rapporto  
1:1



RPM  
Velocità  
4.000 min<sup>-1</sup>



Max. axial load  
Max. carico assiale  
510 N



Torque  
Momento torcente  
25 Nm



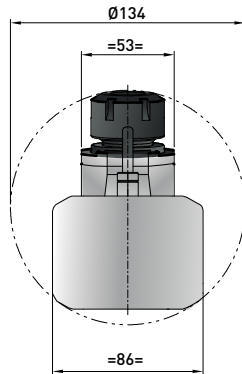
Weight  
Peso  
7 kg



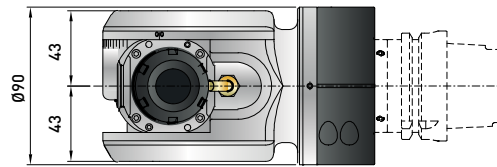
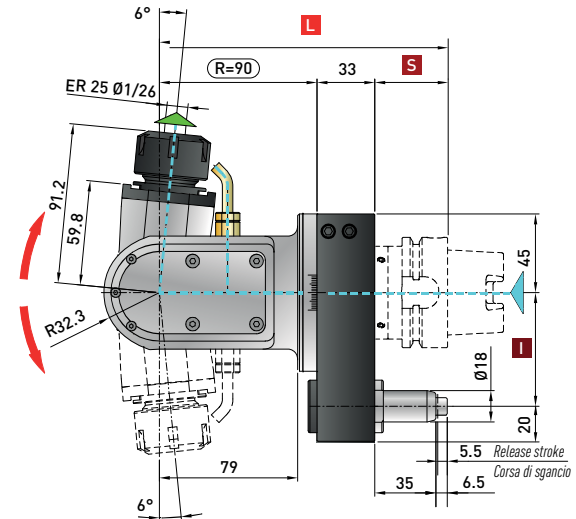
Tapping  
Maschiatura  
Max. M12



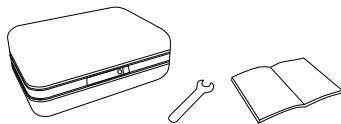
Collet  
Pinza  
ER-25 (ø 1/16 mm)



Minimum diameter  
without tool  
Diametro minimo  
senza utensile



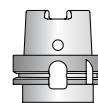
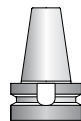
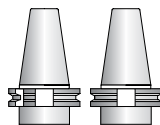
### \* STANDARD EQUIPMENT includes:



Retaining block / Tassello di ritegno / Stop-Block  
**NOT INCLUDED - NON INCLUSO**



- Direction of rotation same as machine spindle / senso di rotazione uguale al mandrino
- Input coolant max. 1450 PSI / ingresso refrigerante max. 100 bar  
Dry rotation is possible / rotazione a secco possibile



Spindle / Cono	DIN 69871-CAT		MAS-BT		HSK		CAPTO	
Size / Grandezza	40-50	40-50	40	50	63-80	100	C5-C6	C8
<b>I</b>	65-80-(110*)	80-(110*)	65-80-(110*)	80-(110*)	65-80-(110*)	80-(110*)	65-80-(110*)	80-(110*)
<b>S</b>	35	35	35	41	42	45	38	40
<b>L</b>	158	158	158	164	165	168	161	163

Dual contact spindles available / Disponibilità coni a doppio contatto

\*optional

### Option / Opzione



bar max  
**12**

Coolant through pin  
Refrigerante attraverso il perno



bar max  
**100**

Coolant through spindle  
Adduzione refrigerante attraverso il cono



**+/- 95°**

Angle  
Angolo



every  
**5°**

Fixed positioning  
Posizionamento fisso

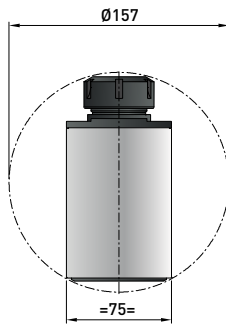
# T90cn-3.5C Neo

ACT9035C

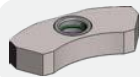
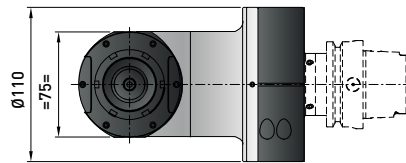
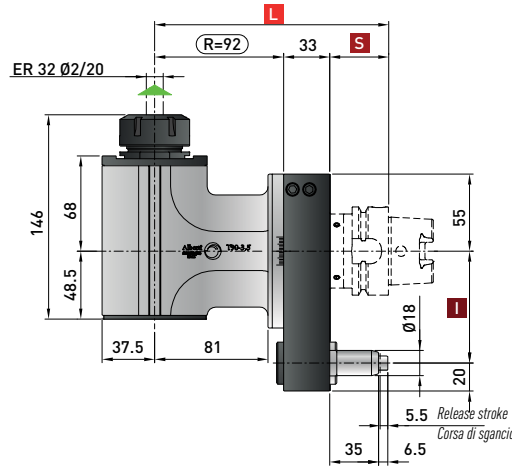
## Technical data

Caratteristiche tecniche

- Ratio**  
Rapporto  
**1:1**
- RPM**  
Velocità  
**5.000 min<sup>-1</sup>**
- Max. axial load**  
Max. carico assiale  
**1.250 N**
- Torque**  
Momento torcente  
**70 Nm**
- Weight**  
Peso  
**11 kg**
- Tapping**  
Maschiatura  
**Max. M16**
- Collet**  
Pinza  
**ER-32 (ø 2/20 mm)**



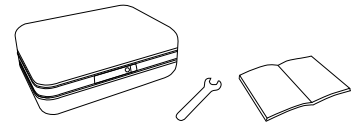
Minimum diameter without tool  
Diametro minimo senza utensile



Retaining block / Tassello di ritegno / Stop-Block  
**NOT INCLUDED - NON INCLUSO**

Direction of rotation same as machine spindle / senso di rotazione uguale al mandrino

**\* STANDARD EQUIPMENT includes:**



Spindle / Cono	DIN 69871-CAT		MAS-BT	HSK		CAPTO	
Size / Grandezza	50		50	63-80	100	C6	C8
<b>I</b>	80-110		80-110	80-110	80-110	80-110	80-110
<b>S</b>	35		41	42	45	38	40
<b>L</b>	160		166	167	170	163	165

Dual contact spindles available / Disponibilità coni a doppio contatto  
\*optional

## Option / Opzione



bar max  
**12**

Coolant through pin  
Refrigerante attraverso il perno



Ø mm  
**22-27**

Arbor output  
Porta fresa



Ø mm max.  
**20**

Weldon output  
Weldon



**ISO-30 HSK-40**

Quick Change  
Attacco rapido  
**Smart Change**



**ER 32/ER 20**

Double output  
Doppia uscita

# T90cn-3.5C Neo IC

ACT9035C.IC

## Technical data

Caratteristiche tecniche



Ratio  
Rapporto  
1:1



RPM  
Velocità  
8.000 min<sup>-1</sup>

DRY  
Running  
5.000 min<sup>-1</sup>



Max. axial load  
Max. carico assiale  
1.250 N



Torque  
Momento torcente  
70 Nm



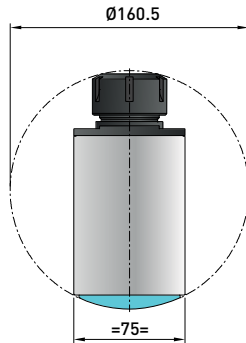
Weight  
Peso  
11 kg



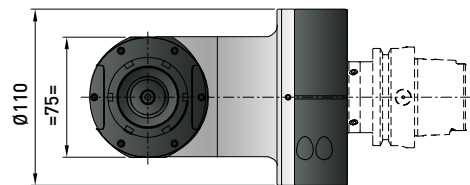
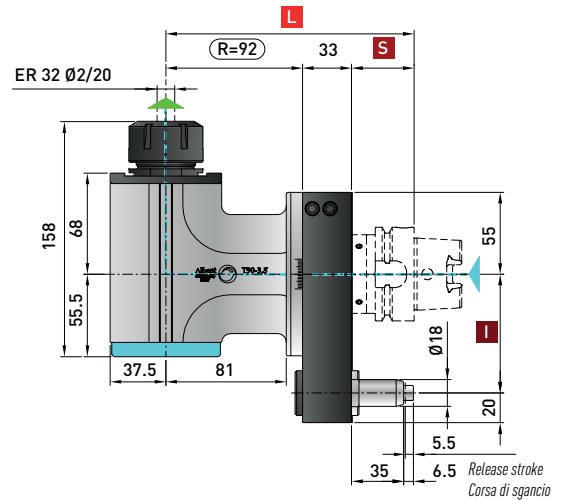
Tapping  
Maschiatura  
Max. M16



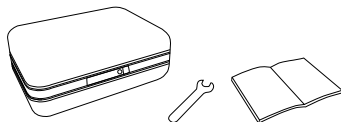
Collet  
Pinza  
ER-32 (ø 2/20 mm)



Minimum diameter  
without tool  
Diametro minimo  
senza utensile



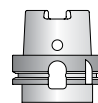
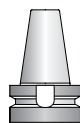
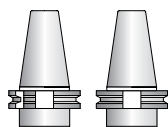
### \* STANDARD EQUIPMENT includes:



Retaining block / Tassello di ritengo / Stop-Block  
**NOT INCLUDED - NON INCLUSO**



- Direction of rotation same as machine spindle / senso di rotazione uguale al mandrino
- Input coolant max. 1450 PSI / ingresso refrigerante max. 100 bar
- Dry rotation is possible / rotazione a secco possibile



Spindle / Cono	DIN 69871-CAT	MAS-BT	HSK		CAPTO	
Size / Grandezza	50	50	63-80	100	C6	C8
<b>I</b>	80-110	80-110	80-110	80-110	80-110	80-110
<b>S</b>	35	41	42	45	38	40
<b>L</b>	160	166	167	170	163	165

Dual contact spindles available / Disponibilità coni a doppio contatto

\*optional

### Option / Opzione



Ø mm  
22-27

Arbor output  
Porta fresa



Ø mm max.  
20

Weldon output  
Weldon



ISO-30 HSK-40

Quick Change  
Attacco rapido  
Smart Change

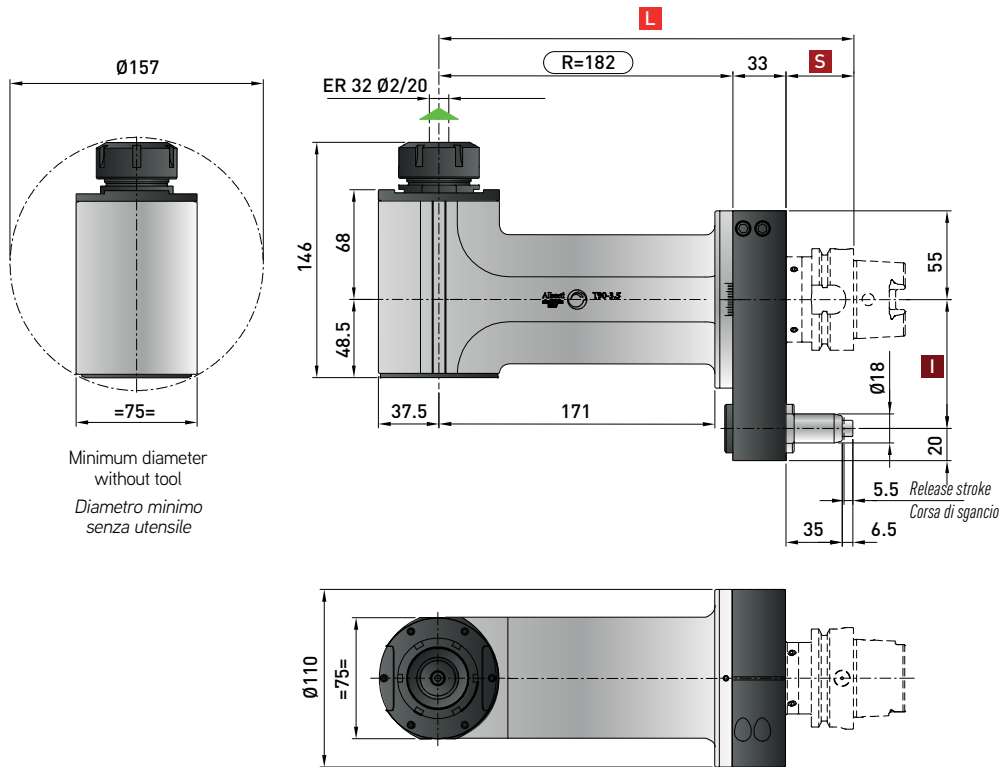
# T90cn-3.5L Neo

ACT9035L

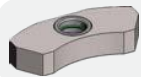
## Technical data

Caratteristiche tecniche

- Ratio**  
Rapporto  
**1:1**
- RPM**  
Velocità  
**5.000 min<sup>-1</sup>**
- Max. axial load**  
Max. carico assiale  
**1.250 N**
- Torque**  
Momento torcente  
**70 Nm**
- Weight**  
Peso  
**13.2 kg**
- Tapping**  
Maschiatura  
**Max. M16**
- Collet**  
Pinza  
**ER-32 (ø 2/20 mm)**



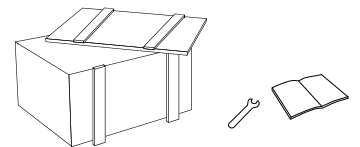
Minimum diameter  
without tool  
Diametro minimo  
senza utensile



Retaining block / Tassello di ritegno / Stop-Block  
**NOT INCLUDED - NON INCLUSO**

Direction of rotation same as machine spindle / senso di rotazione uguale al mandrino

**\* STANDARD EQUIPMENT includes:**



Spindle / Cono	DIN 69871-CAT		MAS-BT	HSK		CAPTO	
Size / Grandezza	50		50	63-80	100	C6	C8
<b>I</b>	80-110		80-110	80-110	80-110	80-110	80-110
<b>S</b>	35		41	42	45	38	40
<b>L</b>	250		256	257	260	253	255

Dual contact spindles available/Disponibilità coni a doppio contatto

\*optional

## Option / Opzione



bar max  
**12**

Coolant through pin  
Refrigerante attraverso il perno



Ø mm  
**22-27**

Arbor output  
Porta fresa



Ø mm max.  
**20**

Weldon output  
Weldon



**ISO-30 HSK-40**

Quick Change  
Attacco rapido  
**Smart Change**



**ER 32/ER 20**

Double output  
Doppia uscita

# T90cn-3.5L Neo IC

ACT9035L.IC

## Technical data

Caratteristiche tecniche



Ratio  
Rapporto  
1:1



RPM  
Velocità  
8.000 min<sup>-1</sup>

DRY  
Running  
5.000 min<sup>-1</sup>



Max. axial load  
Max. carico assiale  
1.250 N



Torque  
Momento torcente  
70 Nm



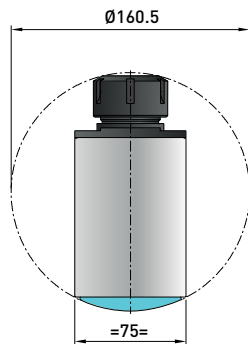
Weight  
Peso  
13.2 kg



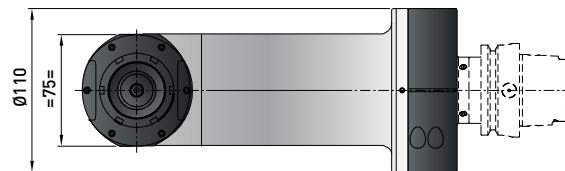
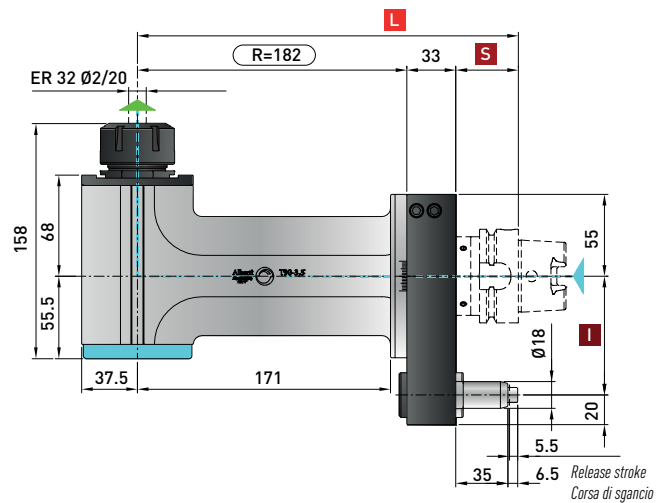
Tapping  
Maschiatura  
Max. M16



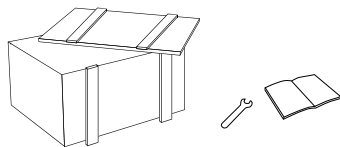
Collet  
Pinza  
ER-32 (ø 2/20 mm)



Minimum diameter  
without tool  
Diametro minimo  
senza utensile



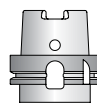
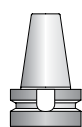
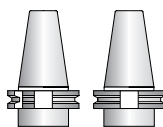
### \* STANDARD EQUIPMENT includes:



Retaining block / Tassello di ritegno / Stop-Block  
**NOT INCLUDED - NON INCLUSO**



- Direction of rotation same as machine spindle / senso di rotazione uguale al mandrino
- Input coolant max. 1450 PSI / ingresso refrigerante max. 100 bar
- Dry rotation is possible / rotazione a secco possibile



Spindle / Cono	DIN 69871-CAT	MAS-BT	HSK		CAPTO	
Size / Grandezza	50	50	63-80	100	C6	C8
<b>I</b>	80-110	80-110	80-110	80-110	80-110	80-110
<b>S</b>	35	41	42	45	38	40
<b>L</b>	250	256	257	260	253	255

Dual contact spindles available/Disponibilità coni a doppio contatto  
\*optional

### Option / Opzione



Ø mm  
22-27

Arbor output  
Porta fresa



Ø mm max.  
20

Weldon output  
Weldon



ISO-30 HSK-40

Quick Change  
Attacco rapido  
Smart Change

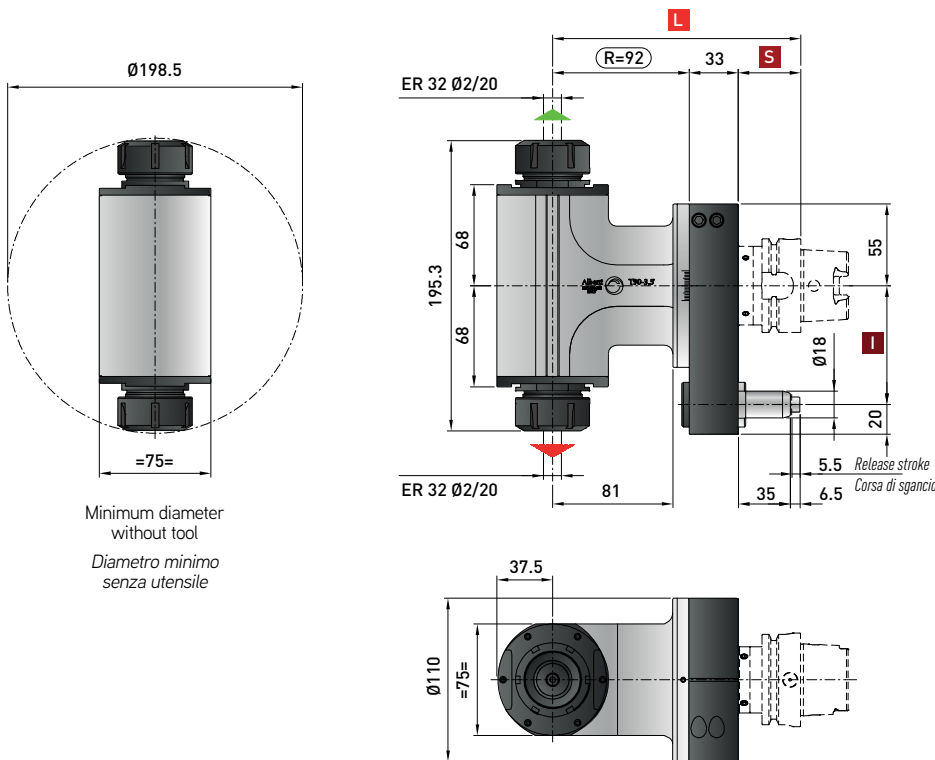
# T90cn-3.5 2U Neo

ACT9035D

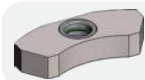
## Technical data

Caratteristiche tecniche

- Ratio**  
Rapporto  
**1:1**
- RPM**  
Velocità  
**4.000 min<sup>-1</sup>**
- Max. axial load**  
Max. carico assiale  
**1.250 N**
- Torque**  
Momento torcente  
**70 Nm**
- Weight**  
Peso  
**12 kg**
- Tapping**  
Maschiatura  
**Max. M16**
- Collet**  
Pinza  
**ER-32 (ø 2/20 mm)**  
**ER-32 (ø 2/20 mm)**



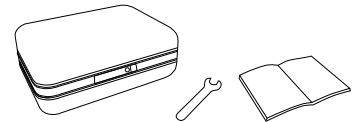
Minimum diameter  
without tool  
Diametro minimo  
senza utensile



Retaining block / Tassello di ritegno / Stop-Block  
**NOT INCLUDED - NON INCLUSO**

- Direction of rotation same as machine spindle / senso di rotazione uguale al mandrino
- Direction of rotation opposite as machine spindle / senso di rotazione contrario al mandrino

**\* STANDARD EQUIPMENT includes:**



Spindle / Cono	DIN 69871-CAT		MAS-BT	HSK		CAPTO	
Size / Grandezza	50		50	63-80	100	C6	C8
<b>I</b>	80-110		80-110	80-110	80-110	80-110	80-110
<b>S</b>	35		41	42	45	38	40
<b>L</b>	160		166	167	170	163	165

Dual contact spindles available / Disponibilità coni a doppio contatto  
\*optional

Non interchangeable input drive shank / Coni di attacco non intercambiabili

## Option / Opzione



bar max  
**12**

Coolant through pin  
Refrigerante attraverso il perno



Ø mm  
**22-27**

Arbor output  
Porta fresa



Ø mm max.  
**20**

Weldon output  
Weldon



**HSK-40**

Quick Change  
Attacco rapido  
Smart Change



# TR90cn-3.5 Neo

ACTR935C

## Technical data

Caratteristiche tecniche



Ratio  
Rapporto  
1:1



RPM  
Velocità  
4.000 min<sup>-1</sup>



Max. axial load  
Max. carico assiale  
910 N



Torque  
Momento torcente  
70 Nm



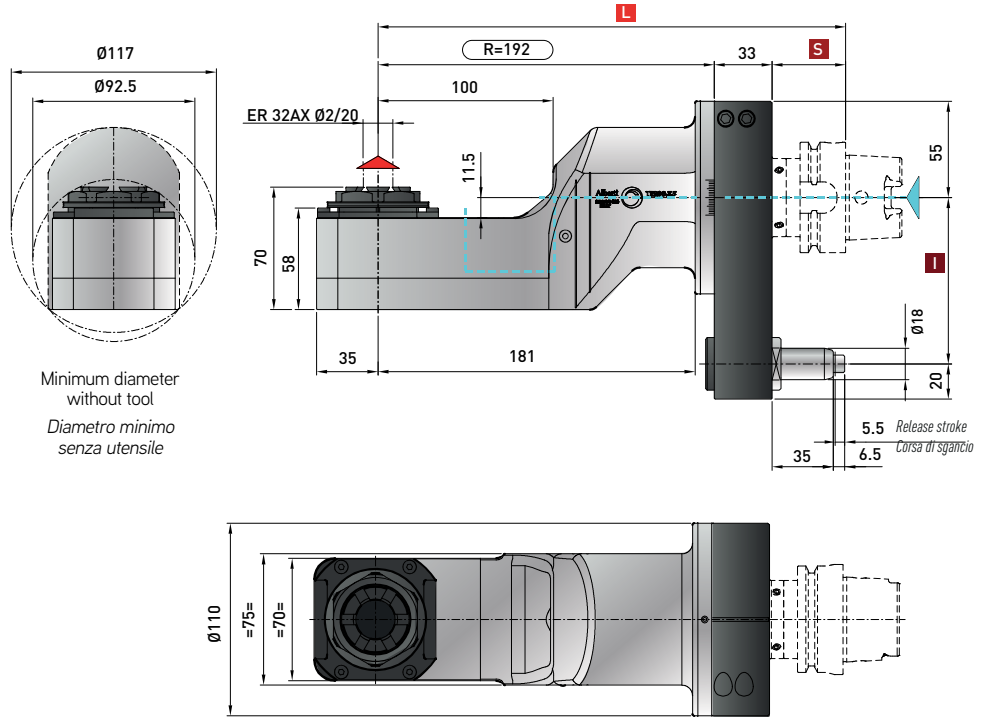
Weight  
Peso  
10 kg



Tapping  
Maschiatura  
Max. M16

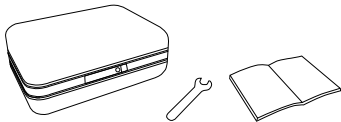


Collet  
Pinza  
ER-32 (ø 2-20 mm)



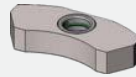
Minimum diameter  
without tool  
Diametro minimo  
senza utensile

### \* STANDARD EQUIPMENT includes:

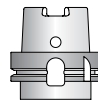
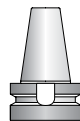
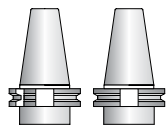


Retaining block / Tassello di ritegno / Stop-Block

NOT INCLUDED - NON INCLUSO



- Direction of rotation opposite as machine spindle / senso di rotazione contrario al mandrino
- Input coolant max. 1450 PSI / ingresso refrigerante max. 100 bar  
Dry rotation is possible / rotazione a secco possibile



Spindle / Cono	DIN 69871-CAT	MAS-BT	HSK		CAPTO	
Size / Grandezza	50	50	63-80	100	C6	C8
<b>I</b>	80-110	80-110	80-110	80-110	80-110	80-110
<b>S</b>	35	41	42	45	38	40
<b>L</b>	260	266	267	270	263	265

Dual contact spindles available / Disponibilità coni a doppio contatto

\*optional

Non interchangeable input drive shank / Coni di attacco non intercambiabili

### Option / Opzione



bar max  
100

Coolant through spindle  
Refrigerante attraverso il cono

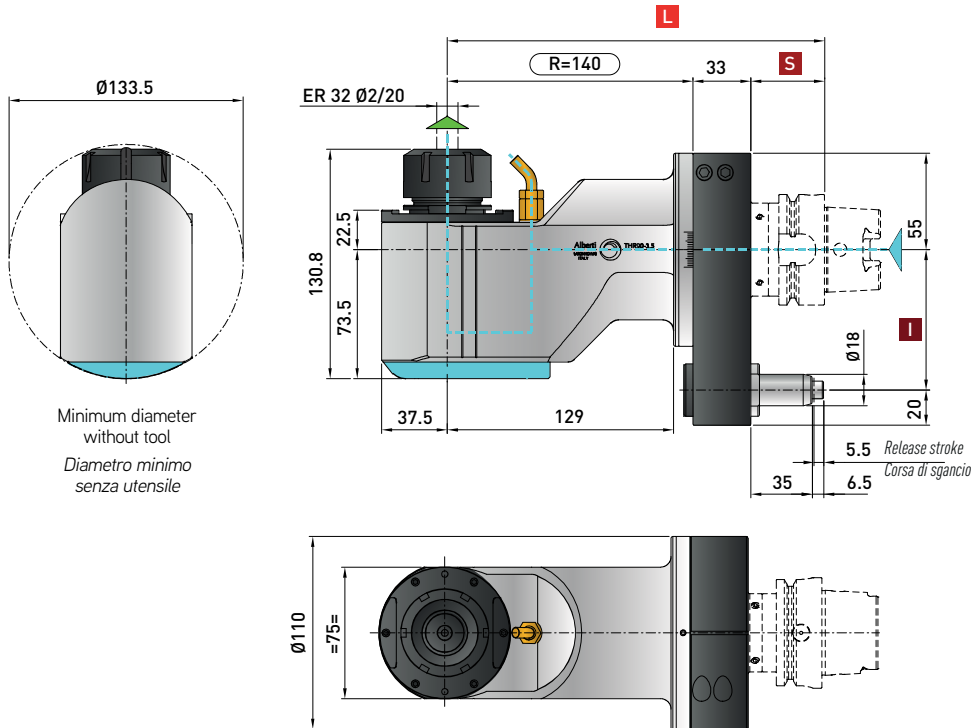
# THRcn-3.5 Neo IC

## ACTHR935C.IC

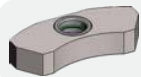
### Technical data

Caratteristiche tecniche

- Ratio**  
Rapporto  
**1:1**
- RPM**  
Velocità  
**8.000 min<sup>-1</sup>** | **DRY Running**  
**5.000 min<sup>-1</sup>**
- Max. axial load**  
Max. carico assiale  
**1250 N**
- Torque**  
Momento torcente  
**70 Nm**
- Weight**  
Peso  
**11.5 kg**
- Tapping**  
Maschiatura  
**Max. M16**
- Collet**  
Pinza  
**ER-32 (ø 2/20 mm)**



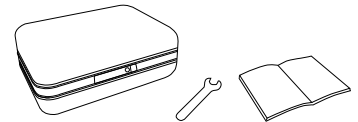
Minimum diameter  
without tool  
Diametro minimo  
senza utensile



Retaining block / Tassello di ritegno / Stop-Block  
**NOT INCLUDED - NON INCLUSO**

- Direction of rotation same as machine spindle / senso di rotazione uguale al mandrino
- Input coolant max. 1450 PSI / ingresso refrigerante max. 100 bar  
Dry rotation is possible / rotazione a secco possibile

**\* STANDARD EQUIPMENT includes:**



Spindle / Cono	DIN 69871-CAT		MAS-BT	HSK		CAPTO	
Size / Grandezza	50		50	63-80	100	C6	C8
<b>I</b>	80-110		80-110	80-110	80-110	80-110	80-110
<b>S</b>	35		41	42	45	38	40
<b>L</b>	208		214	215	218	211	213

Dual contact spindles available / Disponibilità coni a doppio contatto  
\*optional

### Option / Opzione



Ø mm  
**22-27**

Arbor output  
Porta fresa



Ø mm max.  
**20**

Welded output  
Weldon



**ISO-30 HSK-40**

Quick Change  
Attacco rapido  
Smart Change

# TCUcn-3.5 Neo

ACTCU35C

## Technical data

Caratteristiche tecniche



Ratio  
Rapporto  
1:1



RPM  
Velocità  
4.000 min<sup>-1</sup>



Max. axial load  
Max. carico assiale  
700 N



Torque  
Momento torcente  
50 Nm



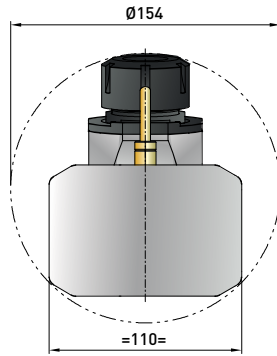
Weight  
Peso  
13 kg



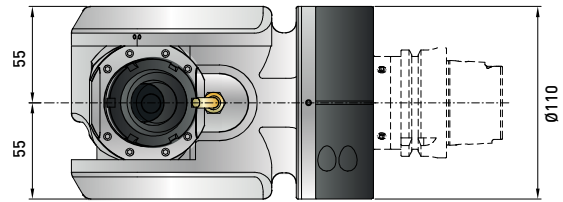
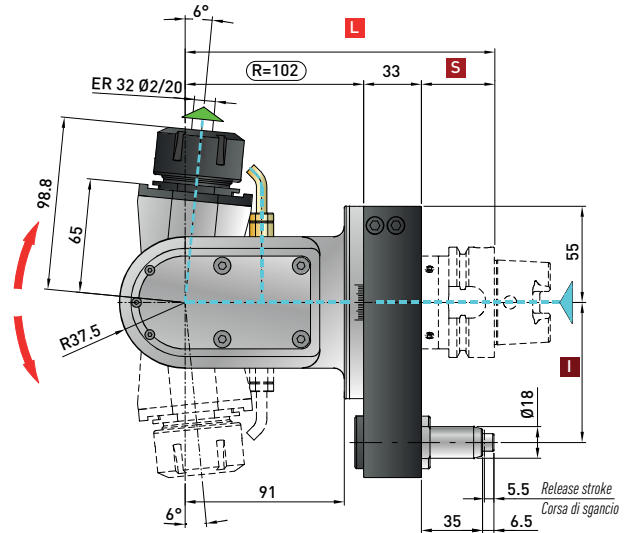
Tapping  
Maschiatura  
Max. M16



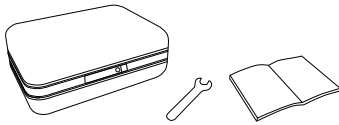
Collet  
Pinza  
ER-32 (ø 2/20 mm)



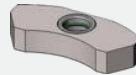
Minimum diameter  
without tool  
Diametro minimo  
senza utensile



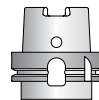
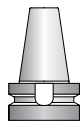
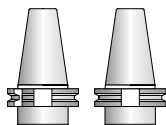
### \* STANDARD EQUIPMENT includes:



Retaining block / Tassello di ritegno / Stop-Block  
**NOT INCLUDED - NON INCLUSO**



- Direction of rotation same as machine spindle / senso di rotazione uguale al mandrino
- Input coolant max. 1450 PSI / ingresso refrigerante max. 100 bar  
Dry rotation is possible / rotazione a secco possibile



Spindle / Cono	DIN 69871-CAT	MAS-BT	HSK		CAPTO	
Size / Grandezza	50	50	63-80	100	C6	C8
<b>I</b>	80-110	80-110	80-110	80-110	80-110	80-110
<b>S</b>	35	41	42	45	38	40
<b>L</b>	170	176	177	180	173	175

Dual contact spindles available / Disponibilità coni a doppio contatto

\*optional

### Option / Opzione



bar max  
12

Coolant through pin  
Refrigerante attraverso il perno



**Smart Change**

Quick change  
Attacco rapido



+/- 95°

Angle  
Angolo



every  
5°

Fixed positioning  
Posizionamento fisso

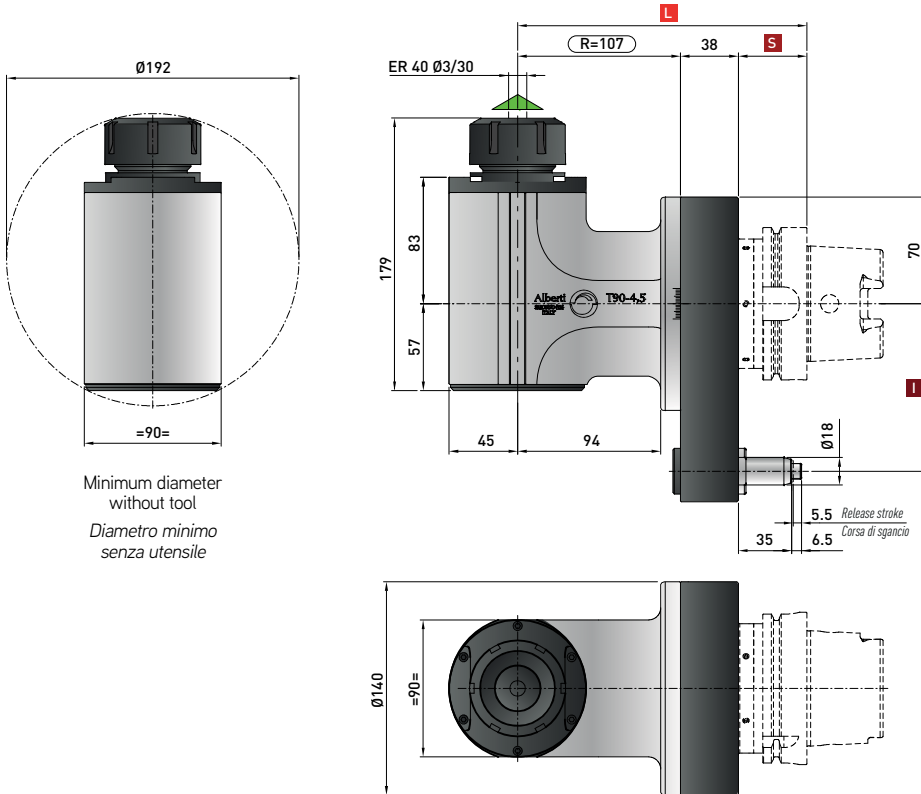
# T90cn-4.5C Neo

ACT9045C

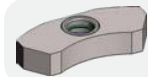
## Technical data

Caratteristiche tecniche


-  **Ratio**  
Rapporto  
**1:1**
-  **RPM**  
Velocità  
**4.000 min<sup>-1</sup>**
-  **Max. axial load**  
Max. carico assiale  
**1.750 N**
-  **Torque**  
Momento torcente  
**120 Nm**
-  **Weight**  
Peso  
**17 kg**
-  **Tapping**  
Maschiatura  
**Max. M20**
-  **Collet**  
Pinza  
**ER-40 (ø 3/30 mm)**



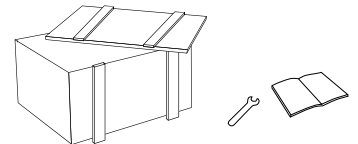
Minimum diameter  
without tool  
Diametro minimo  
senza utensile



Retaining block / Tassello di ritegno / Stop-Block  
**NOT INCLUDED - NON INCLUSO**

 Direction of rotation same as machine spindle / senso di rotazione uguale al mandrino

**\* STANDARD EQUIPMENT includes:**



Spindle / Cono	DIN 69871-CAT	MAS-BT	HSK		CAPTO
Size / Grandezza	50	50	80	100	C8
<b>I</b>	80-110	80-110	80-110	80-110	80-110
<b>S</b>	35	41	42	45	40
<b>L</b>	180	186	187	190	185

Dual contact spindles available / Disponibilità coni a doppio contatto  
\*optional

## Option / Opzione



bar max  
**12**

Coolant through pin  
Refrigerante attraverso il perno



Ø mm  
**27**

Arbor output  
Porta fresa



Ø mm max.  
**25**

Weldon output  
Weldon



**HSK-50 / CAPTO C4**

Quick Change  
Attacco rapido



**ER 40/ER 25**

Double output  
Doppia uscita

# T90cn-4.5C Neo IC

ACT9045C.IC

## Technical data

Caratteristiche tecniche



Ratio  
Rapporto  
1:1



RPM  
Velocità  
6.000 min<sup>-1</sup>

DRY  
Running  
4.000 min<sup>-1</sup>



Max. axial load  
Max. carico assiale  
1.750 N



Torque  
Momento torcente  
120 Nm



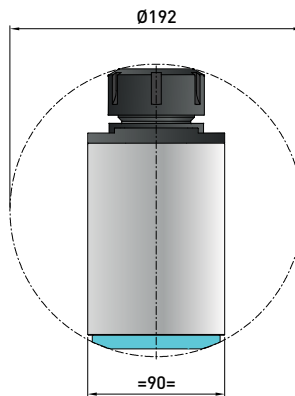
Weight  
Peso  
17 kg



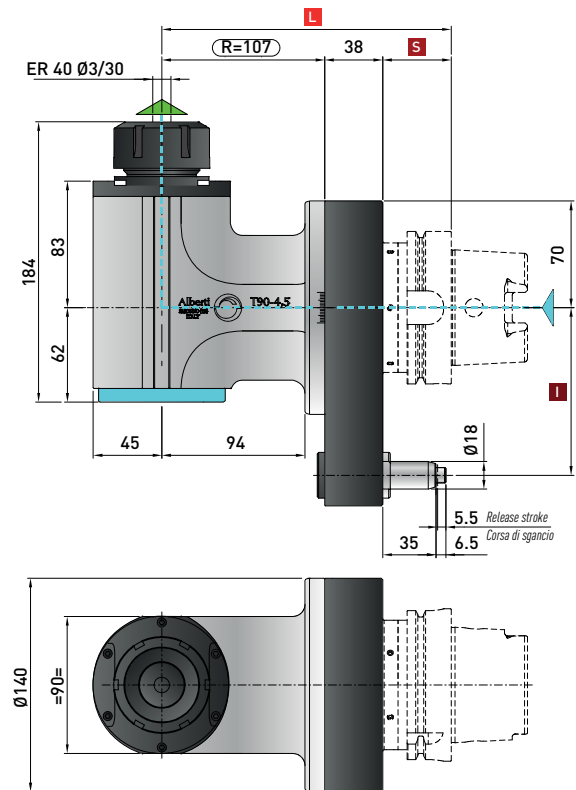
Tapping  
Maschiatura  
Max. M20



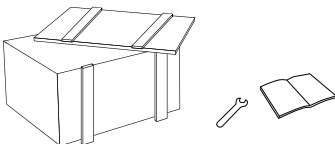
Collet  
Pinza  
ER-40 (ø 3/30 mm)



Minimum diameter  
without tool  
Diametro minimo  
senza utensile



### \* STANDARD EQUIPMENT includes:



Retaining block / Tassello di ritengo / Stop-Block  
**NOT INCLUDED - NON INCLUSO**



- ▲ Direction of rotation same as machine spindle / senso di rotazione uguale al mandrino
- ▲ Input coolant max. 1450 PSI / ingresso refrigerante max. 100 bar
- ▲ Dry rotation is possible / rotazione a secco possibile

Spindle / Cono	DIN 69871-CAT	MAS-BT	HSK		CAPTO
Size / Grandezza	50	50	80	100	C8
<b>I</b>	80-110	80-110	80-110	80-110	80-110
<b>S</b>	35	41	42	45	40
<b>L</b>	180	186	187	190	185

Dual contact spindles available / Disponibilità coni a doppio contatto

\*optional

### Option / Opzione



Ø mm  
27

Arbor output  
Porta fresa



Ø mm max.  
25

Weldon output  
Weldon



HSK-50 / CAPTO C4

Quick Change  
Attacco rapido

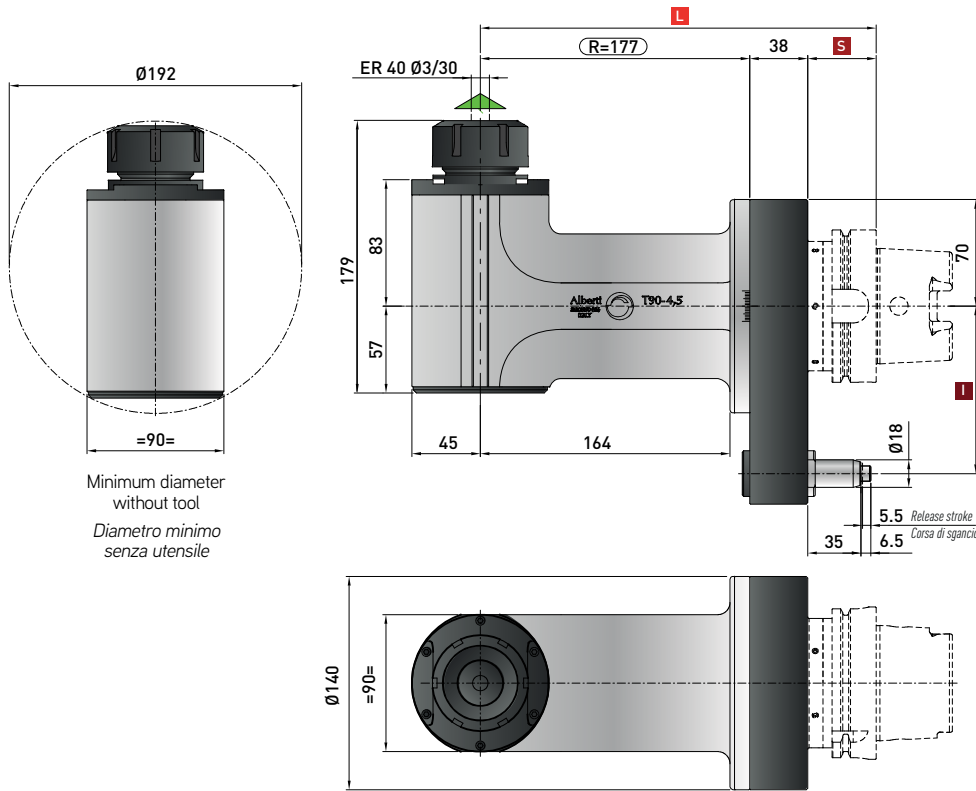
# T90cn-4.5L Neo

ACT9045L

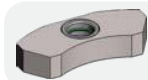
## Technical data

Caratteristiche tecniche

- Ratio**  
Rapporto  
**1:1**
- RPM**  
Velocità  
**4.000 min<sup>-1</sup>**
- Max. axial load**  
Max. carico assiale  
**1.750 N**
- Torque**  
Momento torcente  
**120 Nm**
- Weight**  
Peso  
**20 kg**
- Tapping**  
Maschiatura  
**Max. M20**
- Collet**  
Pinza  
**ER-40 (ø 3/30 mm)**



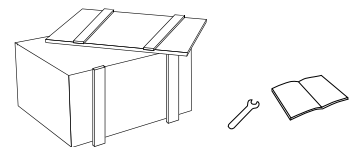
Minimum diameter  
without tool  
Diametro minimo  
senza utensile



Retaining block / Tassello di ritegno / Stop-Block  
**NOT INCLUDED - NON INCLUSO**

Direction of rotation same as machine spindle / senso di rotazione uguale al mandrino

**\* STANDARD EQUIPMENT includes:**



Spindle / Cono	DIN 69871-CAT	MAS-BT	HSK	HSK	CAPTO
Size / Grandezza	50	50	80	100	C8
<b>I</b>	80-110	80-110	80-110	80-110	80-110
<b>S</b>	35	41	42	45	40
<b>L</b>	250	256	257	260	255

Dual contact spindles available / Disponibilità coni a doppio contatto

\*optional

## Option / Opzione



bar max  
**12**

Coolant through pin  
Refrigerante attraverso il perno



Ø mm  
**27**

Arbor output  
Porta fresa



Ø mm max.  
**25**

Weldon output  
Weldon



**HSK-50 / CAPTO C4**

Quick Change  
Attacco rapido



**ER 40/ER 25**

Double output  
Doppia uscita

# T90cn-4.5L Neo IC

ACT9045L.IC

## Technical data

Caratteristiche tecniche



Ratio  
Rapporto  
1:1



RPM  
Velocità  
6.000 min<sup>-1</sup>

DRY  
Running  
4.000 min<sup>-1</sup>



Max. axial load  
Max. carico assiale  
1.750 N



Torque  
Momento torcente  
120 Nm



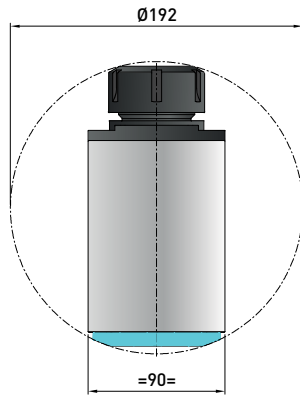
Weight  
Peso  
20 kg



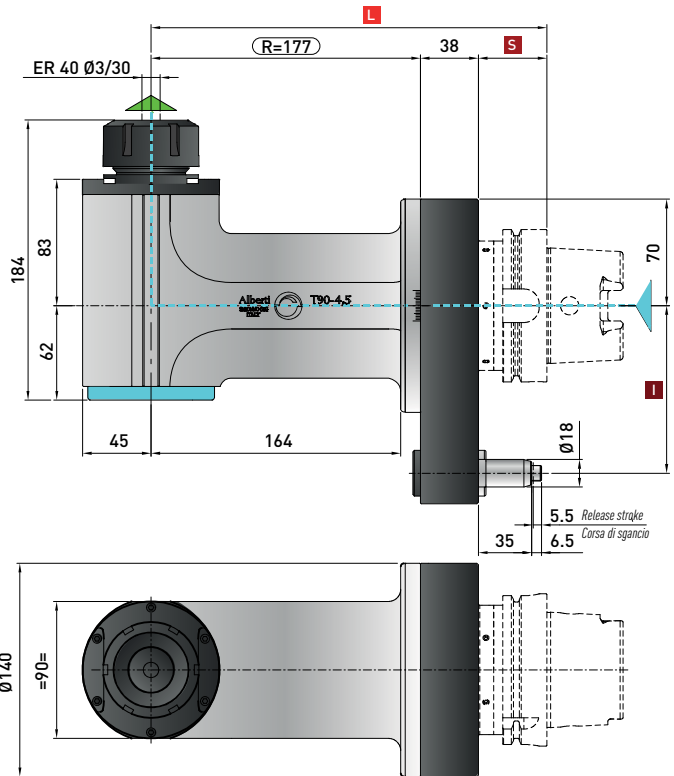
Tapping  
Maschiatura  
Max. M20



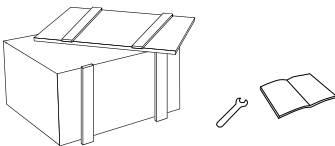
Collet  
Pinza  
ER-40 (ø 3/30 mm)



Minimum diameter  
without tool  
Diametro minimo  
senza utensile



### \* STANDARD EQUIPMENT includes:



Retaining block / Tassello di ritengo / Stop-Block

NOT INCLUDED - NON INCLUSO



- Direction of rotation same as machine spindle / senso di rotazione uguale al mandrino
- Input coolant max. 1450 PSI / ingresso refrigerante max. 100 bar
- Dry rotation is possible / rotazione a secco possibile

Spindle / Cono	DIN 69871-CAT	MAS-BT	HSK		CAPTO
Size / Grandezza	50	50	80	100	C8
<b>I</b>	80-110	80-110	80-110	80-110	80-110
<b>S</b>	35	41	42	45	40
<b>L</b>	250	256	257	260	255

Dual contact spindles available / Disponibilità coni a doppio contatto

\*optional

### Option / Opzione



Ø mm  
27

Arbor output  
Porta fresa



Ø mm max.  
25

Weldon output  
Weldon



HSK-50 / CAPTO C4

Quick Change  
Attacco rapido

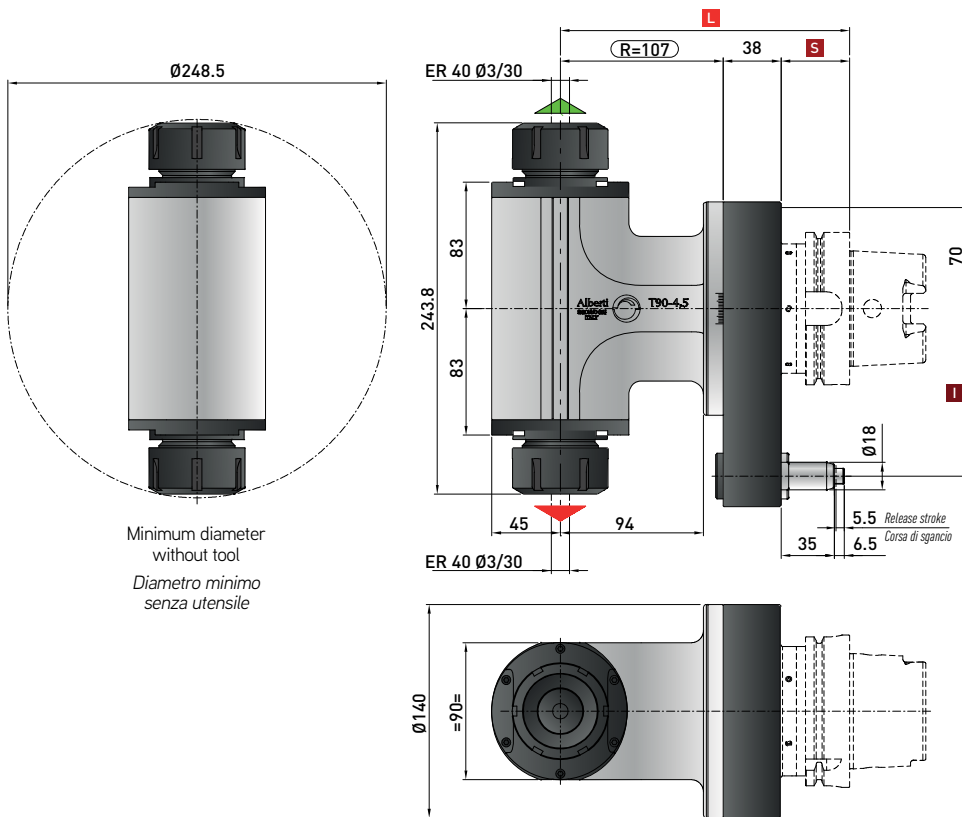
# T90cn-4.5 2U Neo

ACT9045D

## Technical data

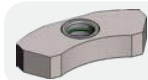
Caratteristiche tecniche

-  **Ratio**  
Rapporto  
**1:1**
-  **RPM**  
Velocità  
**4.000 min<sup>-1</sup>**
-  **Max. axial load**  
Max. carico assiale  
**1.750 N**
-  **Torque**  
Momento torcente  
**120 Nm**
-  **Weight**  
Peso  
**20 kg**
-  **Tapping**  
Maschiatura  
**Max. M20**
-  **Collet**  
Pinza  
ER-40 (ø 3/30 mm)  
ER-40 (ø 3/30 mm)





Minimum diameter  
without tool

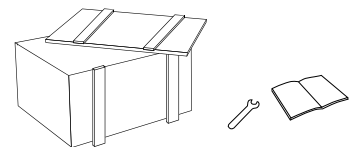
Diametro minimo  
senza utensile



Retaining block / Tassello di ritegno / Stop-Block  
**NOT INCLUDED - NON INCLUSO**

-  Direction of rotation same as machine spindle / senso di rotazione uguale al mandrino
-  Direction of rotation opposite as machine spindle / senso di rotazione contrario al mandrino

**\* STANDARD EQUIPMENT includes:**



Spindle / Cono	DIN 69871-CAT	MAS-BT	HSK		CAPTO
Size / Grandezza	50	50	80	100	C8
<b>I</b>	80-110	80-110	80-110	80-110	80-110
<b>S</b>	35	41	42	45	40
<b>L</b>	180	186	187	190	185

Dual contact spindles available / Disponibilità coni a doppio contatto

\*optional

## Option / Opzione



bar max  
**12**

Coolant through pin  
Refrigerante attraverso il perno



Ø mm  
**27**

Arbor output  
Porta fresa



Ø mm max.  
**25**

Weldon output  
Weldon



**HSK-40**

Quick Change  
Attacco rapido



# TR90cn-4.5 Neo

ACTR945C

## Technical data

Caratteristiche tecniche



Ratio  
Rapporto  
1:1



RPM  
Velocità  
4.000 min<sup>-1</sup>



Max. axial load  
Max. carico assiale  
1.750 N



Torque  
Momento torcente  
120 Nm



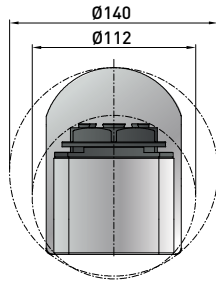
Weight  
Peso  
20 kg



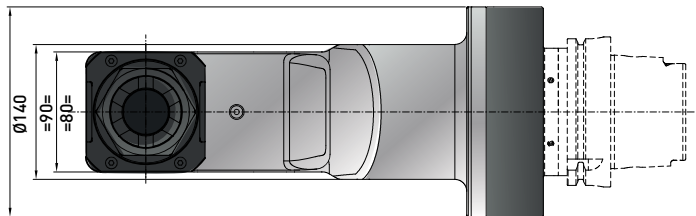
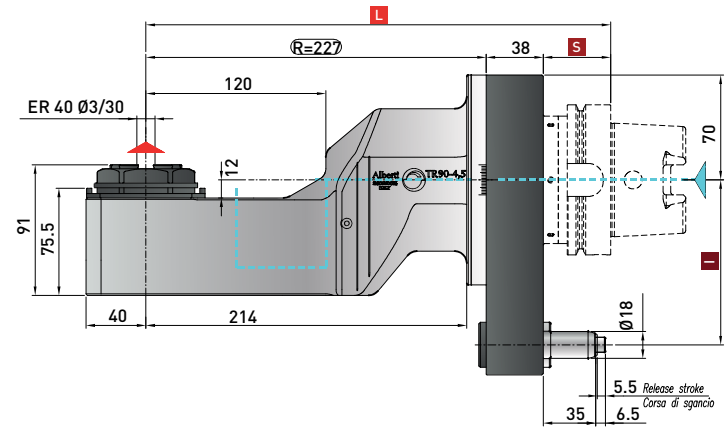
Tapping  
Maschiatura  
Max. M20



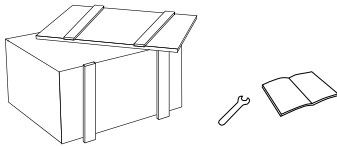
Collet  
Pinza  
ER-40 (ø 3/30 mm)



Minimum diameter  
without tool  
Diametro minimo  
senza utensile

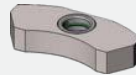


### \* STANDARD EQUIPMENT includes:

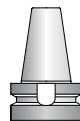
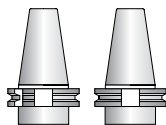


Retaining block / Tassello di ritegno / Stop-Block

NOT INCLUDED - NON INCLUSO



- Direction of rotation same as machine spindle / senso di rotazione uguale al mandrino
- Input coolant max. 1450 PSI / ingresso refrigerante max. 100 bar  
Dry rotation is possible / rotazione a secco possibile



Spindle / Cono	DIN 69871-CAT	MAS-BT	HSK		CAPTO
Size / Grandezza	50	50	80	100	C8
<b>I</b>	80-110	80-110	80-110	80-110	80-110
<b>S</b>	35	41	42	45	40
<b>L</b>	300	306	307	310	305

Dual contact spindles available / Disponibilità coni a doppio contatto

\*optional

### Option / Opzione



bar max  
100

Coolant through spindle  
Refrigerante attraverso il cono

# T90cn-5 HP Neo

ACT905HP

## Technical data

Caratteristiche tecniche



Ratio  
Rapporto  
**1:1**



RPM  
Velocità  
**3.000 min<sup>-1</sup>**



Max. axial load  
Max. carico assiale  
**1.800 N**



Torque  
Momento torcente  
**160 Nm**



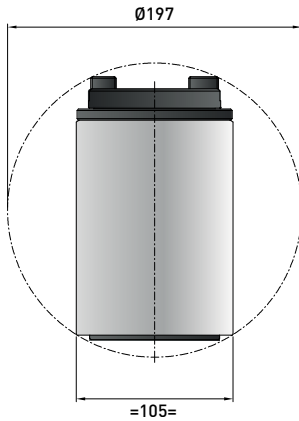
Weight  
Peso  
**22 kg**



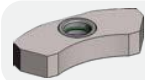
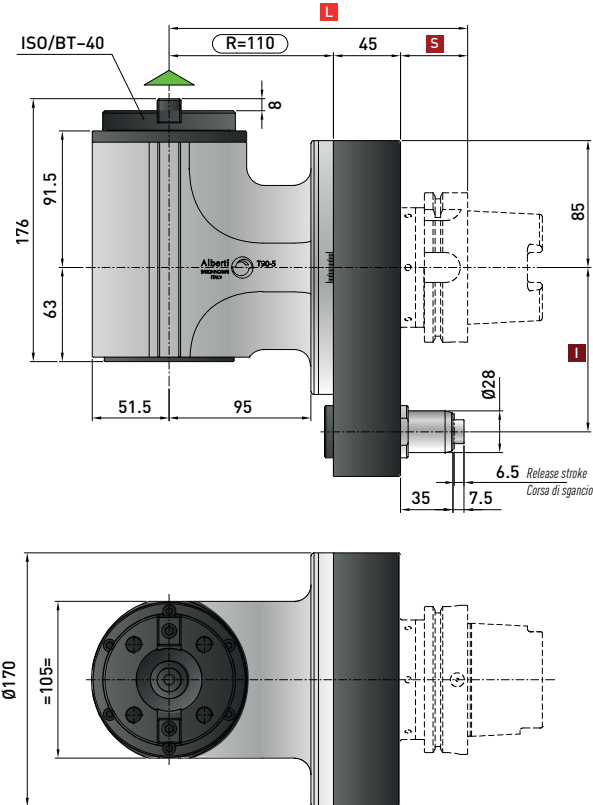
Tapping  
Maschiatura  
**Max. M24**



Collet  
Pinza  
**ISO/BT 40**



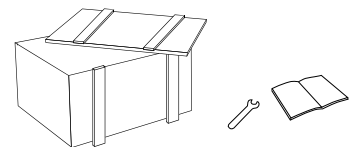
Minimum diameter  
without tool  
Diametro minimo  
senza utensile



Retaining block / Tassello di ritegno / Stop-Block  
**NOT INCLUDED - NON INCLUSO**

Direction of rotation same as machine spindle / senso di rotazione uguale al mandrino

**\* STANDARD EQUIPMENT includes:**



Spindle / Cono	DIN 69871-CAT	MAS-BT	HSK	CAPTO
Size / Grandezza	50	50	100	C8
<b>I</b>	110	110	110	110
<b>S</b>	35	41	45	40
<b>L</b>	190	196	200	195

Dual contact spindles available / Disponibilità coni a doppio contatto  
\*optional

## Option / Opzione



bar max  
**12**

Coolant through pin  
Refrigerante attraverso il perno



**HSK-63 / CAPTO C4 C5 C6**

Quick Change  
Attacco rapido

# T90cn-5C HP Neo IC

ACT905HP.IC

## Technical data

Caratteristiche tecniche



Ratio  
Rapporto  
1:1



RPM  
Velocità  
5.000 min<sup>-1</sup> DRY  
3.000 min<sup>-1</sup> Running



Max. axial load  
Max. carico assiale  
1.800 N



Torque  
Momento torcente  
160 Nm



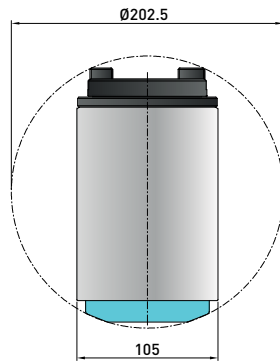
Weight  
Peso  
22 kg



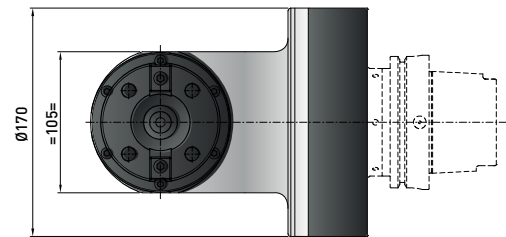
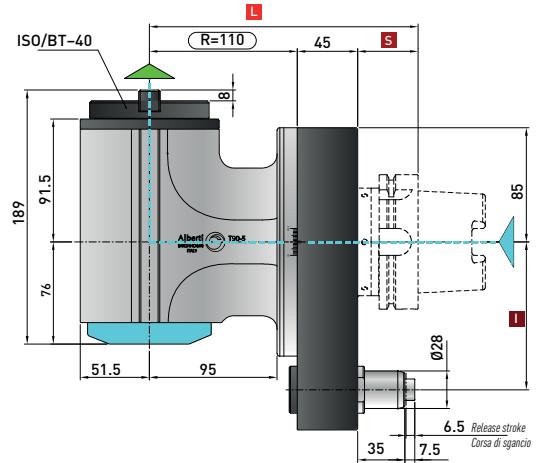
Tapping  
Maschiatura  
Max. M24



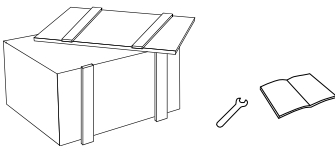
Collet  
Pinza  
ISO/BT 40



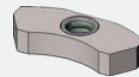
Minimum diameter  
without tool  
Diametro minimo  
senza utensile



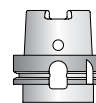
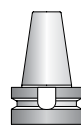
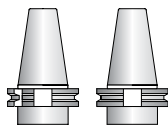
### \* STANDARD EQUIPMENT includes:



Retaining block / Tassello di ritegno / Stop-Block  
**NOT INCLUDED - NON INCLUSO**



- Direction of rotation same as machine spindle / senso di rotazione uguale al mandrino
- Input coolant max. 1450 PSI / ingresso refrigerante max. 100 bar  
Dry rotation is possible / rotazione a secco possibile



Spindle / Cono	DIN 69871-CAT	MAS-BT	HSK		CAPTO
Size / Grandezza	50	50	80	100	C8
<b>I</b>	110	110	110	110	110
<b>S</b>	35	41	42	45	40
<b>L</b>	190	196	197	200	195

Dual contact spindles available / Disponibilità coni a doppio contatto

\*optional

### Option / Opzione



HSK-63 / CAPTO C4 C5 C6

Quick Change  
Attacco rapido

# T90cn-5L HP Neo

ACT905LHP

## Technical data

Caratteristiche tecniche



Ratio  
Rapporto  
**1:1**



RPM  
Velocità  
**3.000 min<sup>-1</sup>**



Max. axial load  
Max. carico assiale  
**1.800 N**



Torque  
Momento torcente  
**160 Nm**



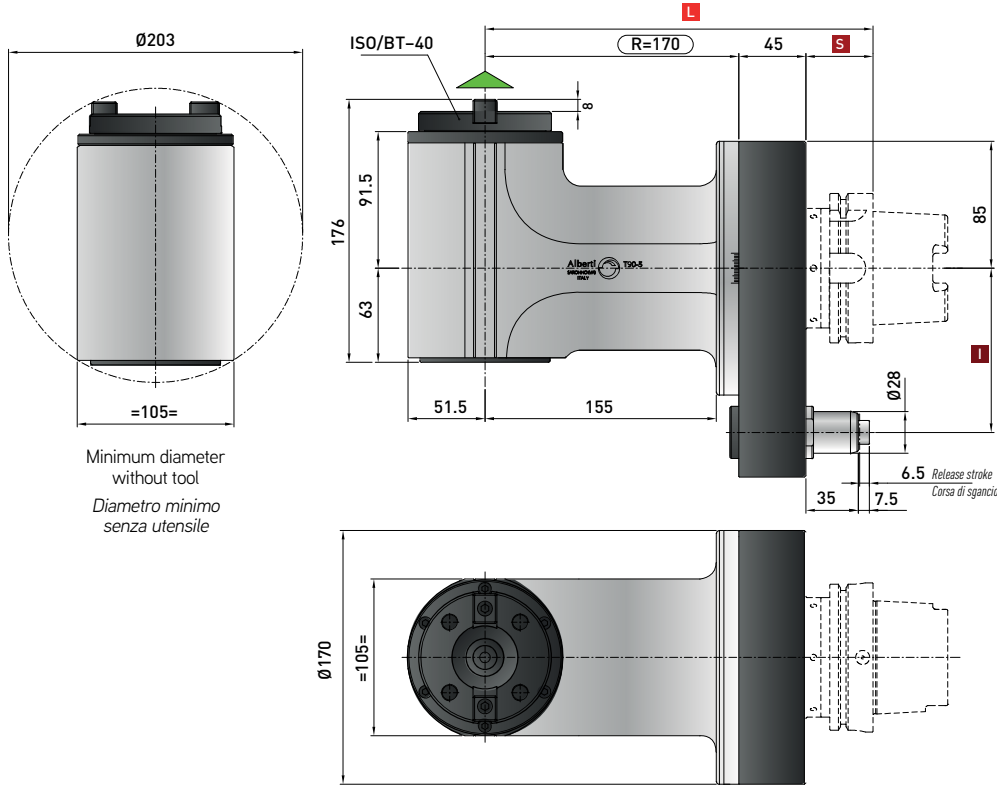
Weight  
Peso  
**26,2 kg**



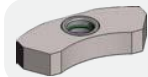
Tapping  
Maschiatura  
**Max. M24**



Collet  
Pinza  
**ISO/BT 40**



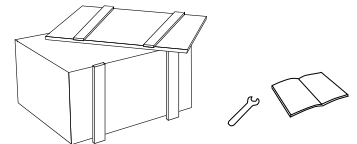
Minimum diameter  
without tool  
Diametro minimo  
senza utensile



Retaining block / Tassello di ritegno / Stop-Block  
**NOT INCLUDED - NON INCLUSO**

Direction of rotation same as machine spindle / senso di rotazione uguale al mandrino

**\* STANDARD EQUIPMENT includes:**



Spindle / Cono	DIN 69871-CAT	MAS-BT	HSK	CAPTO
Size / Grandezza	50	50	100	C8
<b>I</b>	110	110	110	110
<b>S</b>	35	41	45	40
<b>L</b>	250	256	260	255

Dual contact spindles available / Disponibilità coni a doppio contatto

\*optional

## Option / Opzione



bar max  
**12**

Coolant through pin  
Refrigerante attraverso il perno



**HSK-63 / CAPTO C4 C5 C6**

Quick Change  
Attacco rapido

# T90cn-5L HP Neo IC

ACT905LHP.IC

## Technical data

Caratteristiche tecniche



Ratio  
Rapporto  
1:1



RPM  
Velocità  
5.000 min<sup>-1</sup> DRY  
3.000 min<sup>-1</sup> Running



Max. axial load  
Max. carico assiale  
1.800 N



Torque  
Momento torcente  
160 Nm



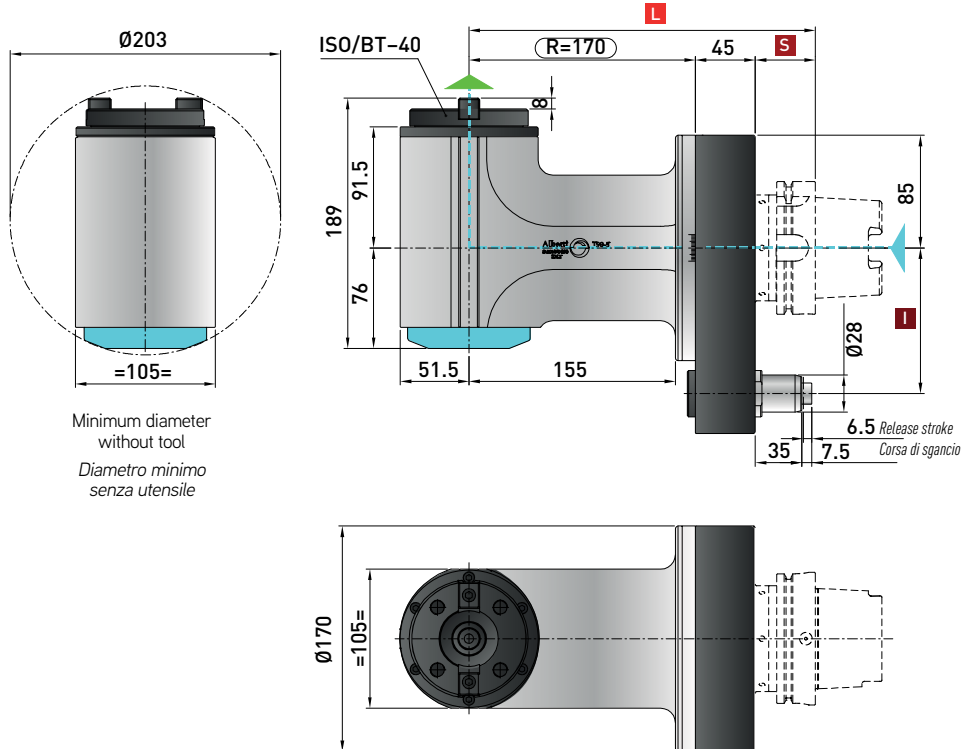
Weight  
Peso  
26,2 kg



Tapping  
Maschiatura  
Max. M24

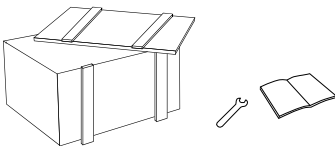


Collet  
Pinza  
ISO/BT 40



Minimum diameter  
without tool  
Diametro minimo  
senza utensile

### \* STANDARD EQUIPMENT includes:



Retaining block / Tassello di ritegno / Stop-Block  
**NOT INCLUDED - NON INCLUSO**



- ▲ Direction of rotation same as machine spindle / senso di rotazione uguale al mandrino
- ▲ Input coolant max. 1450 PSI / ingresso refrigerante max. 100 bar  
Dry rotation is possible / rotazione a secco possibile

Spindle / Cono	DIN 69871-CAT	MAS-BT	HSK	CAPTO
Size / Grandezza	50	50	100	C8
<b>I</b>	110	110	110	110
<b>S</b>	35	41	45	40
<b>L</b>	250	256	260	255

Dual contact spindles available / Disponibilità coni a doppio contatto  
\*optional

### Option / Opzione



HSK-63 / CAPTO C4 C5 C6

Quick Change  
Attacco rapido



## TESTE EXTENDED

Le **TESTE CON PROLUNGA** sono composte da un **blocco modulo di prolunga** sul quale vengono montate una selezione di teste standard.

Grazie alle **teste Extended** è possibile **variare la lunghezza utile della testa** senza ricorrere ad una soluzione speciale per realizzare lavorazioni che richiedono una lunghezza maggiorata.

*The **EXTENDED HEADS** are made up by a portion of extension spacer where it is possible to mount different standard heads.*

*Thanks to the **Extended heads** it is possible to **adjust the overall length of the head** without having a special solution. These heads are mainly used in all applications where the needed length must be extended compared to the standard offering.*



Grazie all'utilizzo di un materiale differente siamo inoltre riusciti a **contenere notevolmente il peso** rispetto alla precedente versione.

Un **sistema modulare componibile**, rende possibile variare la lunghezza del corpo testa aggiungendo l'**elemento di prolunga**.

*Thanks to a different material used we could also **reduce considerably the total weight**.*

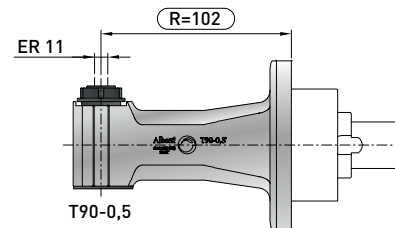
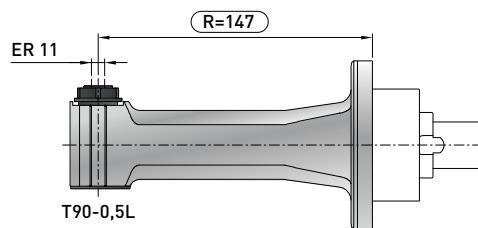
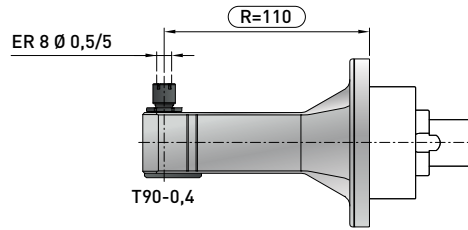
*The **modular system** makes it possible to extend the length of the body by **adding a spacer**.*



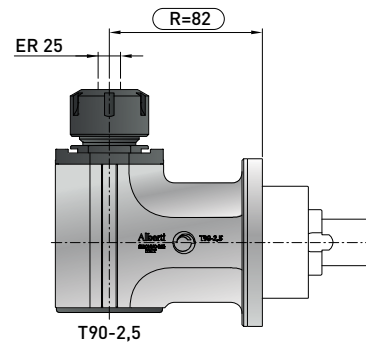
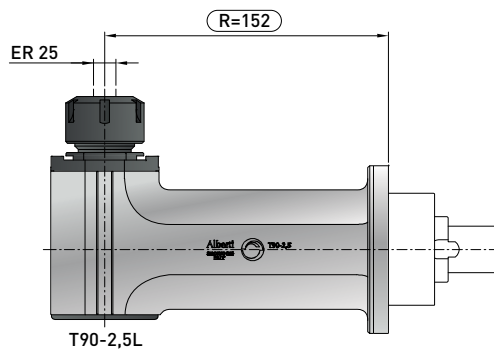
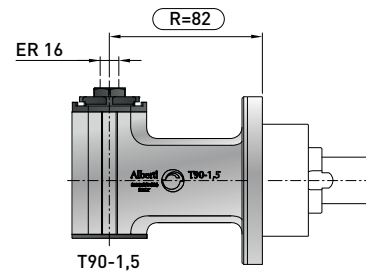
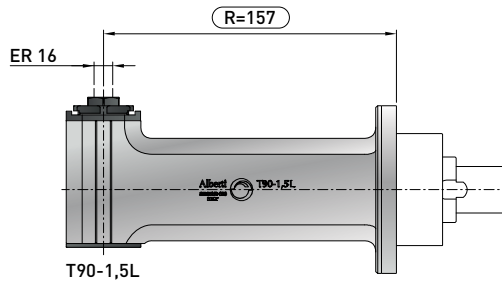
# Teste con **PROLUNGA**

*Extended heads*

8.000 Rpm



6.000 Rpm

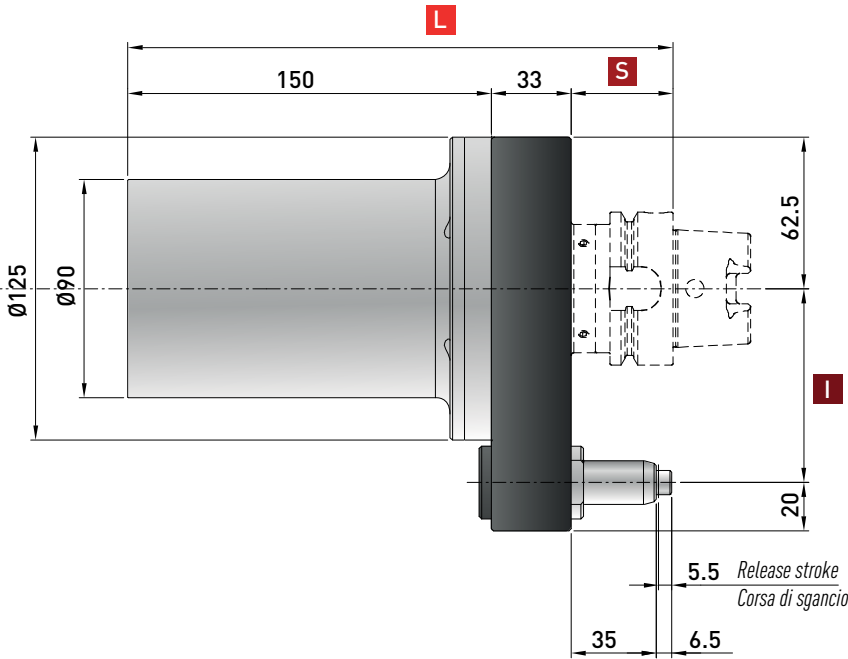


**TECHNICAL DATA PAGE / CARATTERISTICHE TECNICHE A PAGINA**

Testa / Head	Pagina / Page
T90-0,4	106
T90-0,5	107
T90-0,5L	108
T90-1,5	109
T90-1,5L	110
T90-2,5	112
T90-2,5L	113

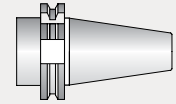
## Teste con **PROLUNGA** Extended heads

Weight  
Peso  
10 kg

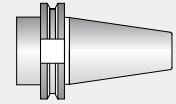


**OPTIONAL DRIVE SHANK\***  
Non interchangeable input drive shank  
Coni non intercambiabili

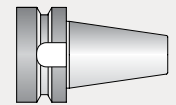
**DIN-69871  
ISO 50**



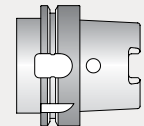
**CAT  
50**



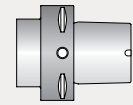
**MAS-BT  
50**



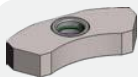
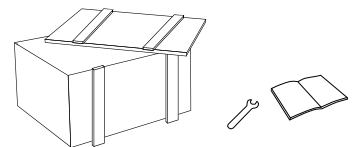
**HSK  
63/80/100**



**CAPTO  
C6/C8**



**\* STANDARD EQUIPMENT  
includes:**



Retaining block / Tassello di ritegno / Stop-Block  
**NOT INCLUDED - NON INCLUSO**

Spindle / Cono	DIN 69871-CAT	MAS-BT	HSK		CAPTO	
Size / Grandezza	50	50	63-80	100	C6	C8
<b>I</b>	80-110	80-110	80-(110*)	80-110	80-(110*)	80-110
<b>S</b>	35	41	42	45	38	40
<b>L</b>	218	224	225	228	221	223

Dual contact spindles available / Disponibilità coni a doppio contatto

\*optional

### TOTAL LENGTH (R+L) / LUNGHEZZA TOTALE TESTA (R+L)

Spindle / Cono	DIN 69871-CAT	MAS-BT	HSK		CAPTO		
Size / Grandezza	50	50	63-80	100	C6	C8	
T90-0.4	mm	328	334	335	338	331	333
T90-0.5C	mm	320	326	327	330	323	325
T90-0.5L	mm	365	371	372	375	368	370
T90-1.5	mm	300	306	307	310	303	305
T90-1.5L	mm	375	381	382	385	378	380
T90-2.5	mm	300	306	307	310	303	305
T90-2.5L	mm	370	376	377	380	373	375